



 **Vemer** SPA

[www.vemer.it](http://www.vemer.it)

Product catalogue





**Vemer offers to the Electrical Industry a wide range of products able to meet all the requirements of the modern installer.**  
**The digital chronothermostats, time switches, measurement instruments, heat regulators and all the other Vemer products ensure maximum quality and functionality that only more than twenty years of experience can guarantee.**



ISO 9001 Certified Quality System

## CLIMATE CONTROL

6

### Digital chronothermostats



### Electronic thermostats



### Mechanical thermostats



### Humidistats



### Accessories



## TIME MANAGEMENT

22

### Electromechanical time switches



### Stair light switches



### Digital time switches



### Astronomical twilight switches



### Twilight switches



### Movement detectors



### Hour meters



## GAS AND SAFETY

36

### Gas detectors



### Safety kit



### Solenoid valves for gas



### DIN-rail transformers



### Buzzers, Bells, Ding-dong sounds



### Emergency lamps



## MEASUREMENT AND CONTROL

46

## HEAT REGULATION

72

## INSULATORS AND BUSBAR SUPPORTS

82

## ACCESSORIES

90

### Measurement instruments



### Network analyzers



### Energy meters



### Current transformers and shunts



### GSM communication interfaces



### Electronic control relays



### Liquid control relays and electric pumps control



### Digital thermometers



### Digital heat regulators



### Refrigeration regulators



### Humidity and pressure regulators



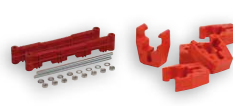
### Probes



### Insulators



### Busbar supports



### Cable grommet



### Technical sprays Lubricant for cable





# CLIMATE CONTROL



**DIGITAL CHRONOTHERMOSTATS**

**10**



**CHRONOTHERMOSTATS FOR RADIATORS**

**13**



**ELECTRONIC THERMOSTATS**

**14**



**MECHANICAL THERMOSTATS**

**17**



**HUMIDISTATS**

**18**



**ACCESSORIES**

**19**

# Selection guide Chronothermostats and Thermostats

## CHRONOTHERMOSTATS



	Iride	Dafne	Chronos	Chronos Key	Mithos	Mithos GSM	Mithos H
<b>Touch Screen</b>	■	—	■	—	—	—	—
<b>Installation</b>	Flush-mounting (3 modules)	Flush-mounting (3 modules)	Wall	Wall	Wall	Wall	Wall
<b>Power supply</b>	Battery / 230V AC	Battery / 230V AC	Battery / 230V AC	Battery / 230V AC	Battery	230V AC	Battery
<b>Programming mode</b>	Digital	Digital	Digital	Digital	Digital	Digital	Digital
<b>RF Version</b>	—	—	■ (Chronos RF)	—	■ (Mithos RF)	■ (Mithos GSM RF)	■
<b>WiFi Version</b>	—	—	—	—	■ (Mithos WiFi)	—	—
<b>Backlit display</b>	■	■	■	■	—	—	—
<b>Colour</b>	White / Grey	White / Grey	White / Black	White / Black	White / Black	White / Black	White / Black

## THERMOSTATS



	Aros	Keo LCD	Keo	Olympo LCD	Olympo	Thalos	Thalos Key
<b>Touch Screen</b>	■	—	—	—	—	■	—
<b>Installation</b>	Flush-mounting (3 modules)	Flush-mounting (3 modules)	Flush-mounting (3 modules)	Wall	Wall	Wall	Wall
<b>Power supply</b>	Battery / 230V AC	Battery / 230V AC	Battery / 230V AC	Battery / 230V AC	Battery / 230V AC	Battery / 230V AC	Battery / 230V AC
<b>RF Version</b>	—	—	—	—	—	■ (Thalos RF)	—
<b>For Fancoil</b>	—	—	—	—	—	—	—
<b>Command type</b>	Electronic	Electronic	Electronic	Electronic	Electronic	Electronic	Electronic
<b>Backlit display</b>	■	■	No display	—	—	■	■
<b>Colour</b>	White / Grey	White / Grey	White / Grey	White / Black	White / Black	White / Black	White / Black





Hipnos	CM100	Eco.X	Evo.DIN	ThermoPro
—	—	—	—	—
Wall	Wall	Wall	Din-rail	For radiator
Battery	Battery	Battery	230 V AC	Battery
With cursors	With trippers	Digital	Digital	Digital
—	—	—	—	■ (ThermoPro RF)
—	—	—	—	—
—	No display	—	—	—
White / Grey	White	White	Grey RAL 7035	White



Thermo GSM	Klio	Klima LCD	Klima	Timm	Kont	Tamb cap
—	—	—	—	—	—	—
Wall	Wall	Wall	Wall	Immersion	Contact	Wall
230 V AC	Battery (230 V AC Klio Fancoil)	Battery / 230 V AC	—	—	—	—
—	—	—	—	—	—	—
—	■ (Klio Fancoil)	—	■ (Klima 2V/3V)	—	—	—
Electronic	Electronic	Electronic	Mechanical	Mechanical	Mechanical	Mechanical
—	—	—	No display	No display	No display	No display
White / Black	White	White	White	White	White	White

# Digital chronothermostats

## FLUSH-MOUNTING

### WEEKLY



Code	Model	Description	Power supply	Colour
<b>VE456000</b>	Iride	3 temperature levels chronothermostat backlit touch screen LCD (changeable cover) *	2x1.5 V batteries (AAA type)	White and grey

\* 2 white and grey covers are included in the package with adapters for the most common civil series plates. Silver cover is available as optional (see Accessories code VE468500)



Code	Model	Description	Power supply	Colour
<b>VE457800</b>	Iride 230	3 temperature levels chronothermostat multicolour backlit touch screen LCD (changeable cover) *	230 V AC	White and grey

\* 2 white and grey covers are included in the package with adapters for the most common civil series plates. Silver cover is available as optional (see Accessories code VE468500)



Code	Model	Description	Power supply	Colour
<b>VN166500</b>	Dafne	3 temperature levels chronothermostat backlit LCD (changeable cover) *	2x1.5 V batteries (AAA type)	White and grey

\* 2 white and grey covers are included in the package with adapters for the most common civil series plates. Silver cover is available as optional (see Accessories code VE601100).



Code	Model	Description	Power supply	Colour
<b>VE431300</b>	Dafne 230	3 temperature levels chronothermostat backlit LCD (changeable cover) *	230 V AC	White and grey

\* 2 white and grey covers are included in the package with adapters for the most common civil series plates. Silver cover is available as optional (see accessories code VE601100)

## WALL-MOUNTING

### WEEKLY



Code	Model	Description	Power supply	Colour
<b>VE451100</b>	Chronos Bianco	3 temperature levels chronothermostat backlit touch screen LCD	2x1.5 V batteries (AAA type)	White

<b>VE452900</b>	Chronos Nero	3 temperature levels chronothermostat backlit touch screen LCD	2x1.5 V batteries (AAA type)	Black
-----------------	--------------	--	------------------------------	-------



Code	Model	Description	Power supply	Colour
<b>VE725800</b>	Chronos Key Bianco	3 temperature levels chronothermostat backlit LCD	2x1.5 V batteries (AAA type)	White

<b>VE726600</b>	Chronos Key Nero	3 temperature levels chronothermostat backlit LCD	2x1.5 V batteries (AAA type)	Black
-----------------	------------------	---	------------------------------	-------

# Digital chronothermostats

## WALL-MOUNTING

### WEEKLY



Code	Model	Description	Power supply	Colour
<b>VE453700</b>	Chronos 230 Bianco	3 temperature levels chronothermostat multicolour backlit touch screen LCD	230 V AC	White
<b>VE454500</b>	Chronos 230 Nero	3 temperature levels chronothermostat multicolour backlit touch screen LCD	230 V AC	Black



Code	Model	Description	Power supply	Colour
<b>VE727400</b>	Chronos Key 230 Bianco	3 temperature levels chronothermostat backlit LCD	230 V AC	White
<b>VE728200</b>	Chronos Key 230 Nero	3 temperature levels chronothermostat backlit LCD	230 V AC	Black



Code	Model	Description	Power supply	Colour
<b>VE486700</b>	Set Chronos RF Bianco	Chronos RF + 1 channel remote actuator for radiofrequency*	2x1.5 V batteries (AAA type)	White
<b>VE487500</b>	Set Chronos RF Nero	Chronos RF + 1 channel remote actuator for radiofrequency*	2x1.5 V batteries (AAA type)	Black

\* Chronos RF and remote actuator are available as optional: see accessories.



Code	Model	Description	Power supply	Colour
<b>VE328100</b>	Mithos Bianco	3 temperature levels chronothermostat	1x1.5 V battery (AA type)	White *
<b>VE312500</b>	Mithos Nero	3 temperature levels chronothermostat	1x1.5 V battery (AA type)	Black *

\* Silver cover is available as optional (see Accessories code VE323200).



Code	Model	Description	Power supply	Colour
<b>VE612800</b>	Mithos Wi-Fi Bianco	3 temperature levels Wi-fi chronothermostat	230 V AC	White *
<b>VE705000</b>	Mithos Wi-Fi Nero	3 temperature levels Wi-fi chronothermostat	230 V AC	Black *

\* Silver cover is available as optional (see Accessories code VE323200).



Code	Model	Description	Power supply	Colour
<b>VE385100</b>	Mithos GSM Bianco	3 temperature levels GSM chronothermostat	230 V AC	White *
<b>VE384400</b>	Mithos GSM Nero	3 temperature levels GSM chronothermostat	230 V AC	Black *

\* Silver cover is available as optional (see Accessories code VE323200).

# Digital chronothermostats

## WALL-MOUNTING

### WEEKLY



Code	Model	Description	Power supply	Colour
<b>VE428900</b>	Set Mithos RF Bianco	Mithos RF + 1 channel remote actuator for radiofrequency **	1x1.5 V battery (AA type)	White *
<b>VE426300</b>	Set Mithos RF Nero	Mithos RF + 1 channel remote actuator for radiofrequency **	1x1.5 V battery (AA type)	Black *

\* Silver cover is available as optional (see Accessories code VE323200).

\*\* Mithos RF and remote actuator are available as optional: see accessories.



Code	Model	Description	Power supply	Colour
<b>VE757100</b>	Set Mithos GSM RF Bianco	Mithos GSM RF + 1 channel remote actuator for radiofrequency **	230V AC	White *
<b>VE757200</b>	Set Mithos GSM RF Nero	Mithos GSM RF + 1 channel remote actuator for radiofrequency **	230V AC	Black *

\* Silver cover is available as optional (see accessories code VE323200).

\*\* Mithos GSM RF and remote actuator are available as optional: see accessories.



Code	Model	Description	Power supply	Colour
<b>VE478400</b>	Mithos H Bianco	3 temperature levels chronothermostat with humidistat	1x1.5 V battery (AA type)	White *
<b>VE479200</b>	Mithos H Nero	3 temperature levels chronothermostat with humidistat	1x1.5 V battery (AA type)	Black *

\* Silver cover is available as optional (see Accessories code VE323200).



Code	Model	Description	Power supply	Colour
<b>VE489100</b>	Mithos H RF Bianco	3 temperature levels chronothermostat with humidistat for radiofrequency **	1x1.5 V battery (AA type)	White *
<b>VE490900</b>	Mithos H RF Nero	3 temperature levels chronothermostat with humidistat for radiofrequency **	1x1.5 V battery (AA type)	Black *

\* Silver cover is available as optional (see Accessories code VE323200).

\*\* Mithos H RF must be combined with one or more remote actuators: see accessories.



Code	Model	Description	Power supply	Colour
<b>VN940300</b>	Athena	3 temperature levels chronothermostat (additional module) *	2x1.5 V batteries (AAA type)	White
<b>VE080800</b>	Athena Argento	3 temperature levels chronothermostat (additional module) *	2x1.5 V batteries (AAA type)	Silver
<b>VE038600</b>	Set Athena	Configured kit composed by Athena + Tx.Athena + Rx1-8A for radiofrequency	2x1.5 V batteries (AAA type)	White

\* Modules for radiofrequency control, bus communication and multizone management are available as optional (see Accessories).



Code	Model	Description	Power supply	Colour
<b>VN160800</b>	Eco.X-W	2 temperature levels chronothermostat	2x1.5 V batteries (AAA type)	White

# Digital chronothermostats

## WALL-MOUNTING

### DAILY



Code	Model	Description	Power supply	Colour
<b>VE013900</b>	Hipnos	Daily chronothermostat with cursors	2x1.5 V batteries (AA type)	White
<b>VE075800</b>	Hipnos Grigio	Daily chronothermostat with cursors	2x1.5 V batteries (AA type)	Grey



Code	Model	Description	Power supply	Colour
<b>VN161600</b>	Eco.X-D	2 temperature levels chronothermostat	2x1.5 V batteries (AAA type)	White



Code	Model	Description	Power supply	Colour
<b>VE618500</b>	CM100	Daily chronothermostat with trippers	2x1.5 V batteries (AA type)	White

## DIN-RAIL

### WEEKLY



Code	Model	Description	Power supply	Colour
<b>VE016200</b>	Evo Din	Weekly chronothermostat with external probe - 4 DIN modules	230 V AC	Grey RAL 7035

## FOR RADIATORS

### BATTERY POWER SUPPLY



Code	Model	Description	Power supply	Colour
<b>VE740700</b>	ThermoPro	Weekly chronothermostat for radiators *	2x1.5 V batteries (AA type)	White
<b>VE741500</b>	ThermoPro RF	Weekly chronothermostat for radiators for radiofrequency **	2x1.5 V batteries (AA type)	White

\* The key for programming this chronothermostat by pc is available as optional (see Accessories code VE742300).  
 \*\* ThermoPro Rf can be combined to radiofrequency thermostats or chronothermostats (see Accessories).



Code	Model	Description	Power supply	Colour
<b>KT040500</b>	Set ThermoPro M3	Mithos RF + 3 remote actuators for radiators ThermoPro RF for radiofrequency	1.5 V battery (AA type)	White

# Electronic thermostats

## FLUSH-MOUNTING



### BATTERY POWER SUPPLY

Code	Model	Description	Power supply	Colour
<b>VE458600</b>	Aros	Thermostat backlit touch screen LCD (changeable cover) *	2x1.5 V batteries (AAA type)	White and grey
<b>VN170700</b>	Keo-B	Electronic thermostat with SUMMER-WINTER-OFF selector switch (changeable cover)*	2x1.5 V batteries (AAA type)	White and grey
<b>VE267100</b>	Keo-B LCD	Electronic thermostat with backlit LCD (changeable cover)*	2x1.5 V batteries (AAA type)	White and grey

\* 2 white and grey covers are included with adapters for the most common civil series plates.  
Silver cover is available as optional (see Accessories code VE469300 for Aros, code VE602900 for Keo-B and code VE603700 for Keo-B LCD).

### 230 V AC POWER SUPPLY



Code	Model	Description	Power supply	Colour
<b>VE459400</b>	Aros 230	Thermostat multicolour backlit touch screen LCD (changeable cover) *	230 V AC	White and grey
<b>VN171500</b>	Keo-A	Electronic thermostat with SUMMER-WINTER-OFF selector switch (changeable cover)*	230 V AC	White and grey
<b>VE558300</b>	Keo-A LCD	Electronic thermostat with backlit LCD (changeable cover)*	230 V AC	White and grey

\* 2 white and grey covers are included with adapters for the most common civil series plates.  
Silver cover is available as optional (see Accessories code VE469300 for Aros 230 and code VE142600 for Keo-A).

## WALL-MOUNTING

### BATTERY POWER SUPPLY



Code	Model	Description	Power supply	Colour
<b>VE432100</b>	Thalos Bianco	Electronic thermostat backlit touch screen LCD	2x1.5 V batteries (AAA type)	White
<b>VE433900</b>	Thalos Nero	Electronic thermostat backlit touch screen LCD	2x1.5 V batteries (AAA type)	Black

# Electronic thermostats

## WALL-MOUNTING



### BATTERY POWER SUPPLY

Code	Model	Description	Power supply	Colour
<b>VE718300</b>	Thalos Key Bianco	Electronic thermostat backlit LCD	2x1.5 V batteries (AAA type)	White
<b>VE719100</b>	Thalos Key Nero	Electronic thermostat backlit LCD	2x1.5 V batteries (AAA type)	Black



Code	Model	Description	Power supply	Colour
<b>VE482600</b>	Set Thalos RF Bianco	Thalos RF + 1 channel remote actuator for radiofrequency *	2x1.5 V batteries (AAA type)	White
<b>VE483400</b>	Set Thalos RF Nero	Thalos RF + 1 channel remote actuator for radiofrequency *	2x1.5 V batteries (AAA type)	Black

\*Thalos RF and remote actuator are available as optional: see accessories.



Code	Model	Description	Power supply	Colour
<b>VE757700</b>	Olympo LCD Bianco	Electronic thermostat with LCD and with SUMMER-WINTER-OFF selector switch	2x1.5 V batteries (AAA type)	White
<b>VE757800</b>	Olympo LCD Nero	Electronic thermostat with LCD and with SUMMER-WINTER-OFF selector switch	2x1.5 V batteries (AAA type)	Black



Code	Model	Description	Power supply	Colour
<b>VE757300</b>	Olympo Bianco	Electronic thermostat with SUMMER-WINTER-OFF selector switch	2x1.5 V batteries (AAA type)	White
<b>VE757400</b>	Olympo Nero	Electronic thermostat with SUMMER-WINTER-OFF selector switch	2x1.5 V batteries (AAA type)	Black



Code	Model	Description	Power supply	Colour
<b>VN941100</b>	Klio	Electronic thermostat with display (additional module) *	2x1.5 V batteries (AAA type)	White

\* Plug-in module TX. Athena and the remote actuator are available as optional (see Accessories ) for radiofrequency.



Code	Model	Description	Power supply	Colour
<b>VE729000</b>	Klima LCD	Electronic thermostat with display	2x1.5 V batteries (AAA type)	White

# Electronic thermostats

## WALL-MOUNTING

### 230 V AC POWER SUPPLY



Code	Model	Description	Power supply	Colour
<b>VE434700</b>	Thalos 230 Bianco	Electronic thermostat multicolour backlit touch screen LCD	230 V AC	White
<b>VE435400</b>	Thalos 230 Nero	Electronic thermostat multicolour backlit touch screen LCD	230 V AC	Black



Code	Model	Description	Power supply	Colour
<b>VE720900</b>	Thalos Key 230 Bianco	Electronic thermostat backlit LCD	230 V AC	White
<b>VE721700</b>	Thalos Key 230 Nero	Electronic thermostat backlit LCD	230 V AC	Black



Code	Model	Description	Power supply	Colour
<b>VE715900</b>	Thermo GSM Bianco	GSM thermostat with configurable input	230 V AC	White *
<b>VE716700</b>	Thermo GSM Nero	GSM thermostat with configurable input	230 V AC	Black *

\* Silver cover is available as optional (see Accessories code VE323200).



Code	Model	Description	Power supply	Colour
<b>VE757900</b>	Olympo LCD 230 Bianco	Electronic thermostat with LCD and with SUMMER-WINTER-OFF selector switch	230 V AC	White
<b>VE758000</b>	Olympo LCD 230 Nero	Electronic thermostat with LCD and with SUMMER-WINTER-OFF selector switch	230 V AC	Black



Code	Model	Description	Power supply	Colour
<b>VE757500</b>	Olympo 230 Bianco	Electronic thermostat with SUMMER-WINTER-OFF selector switch	230 V AC	White
<b>VE757600</b>	Olympo 230 Nero	Electronic thermostat with SUMMER-WINTER-OFF selector switch	230 V AC	Black



Code	Model	Description	Power supply	Colour
<b>VE730800</b>	Klima LCD 230	Electronic thermostat with display	230 V AC	White



Code	Model	Description	Power supply	Colour
<b>VE337200</b>	Set Fancoil	Set composed by a thermostat for fancoil + actuator for fancoil	-	-



# Mechanical thermostats

## WALL-MOUNTING



### GAS EXPANSION

Code	Model	Description	Power supply	Colour
<b>VE018800</b>	Klima 2	Ambient thermostat with winter function	-	White
<b>VE019600</b>	Klima 3	Ambient thermostat with summer/winter function	-	White
<b>VE020400</b>	Klima 3L	Ambient thermostat with summer/winter function + led function	-	White
<b>VE022000</b>	Klima IN	Ambient thermostat with summer/winter function + ON/OFF switch	-	White
<b>VE021200</b>	Klima SI	Ambient thermostat with summer/winter function + ON/OFF switch + led function	-	White
<b>VE023800</b>	Klima SW	Ambient thermostat with summer/winter selector switch	-	White
<b>VE024600</b>	Klima 2V	2-speed ambient thermostat + summer/winter selector switch	-	White
<b>VE268900</b>	Klima 3V	3-speed ambient thermostat + OFF switch	-	White

### LIQUID EXPANSION

Code	Model	Description	Power supply	Colour
<b>VE310900</b>	TAMB cap	Capillary thermostat with regulation - IP 54	-	White

## IMMERSION

### LIQUID EXPANSION

Code	Model	Description	Power supply	Colour
<b>VE305900</b>	TIMM - R100	Capillary thermostat with regulation stem L = 100 mm	-	White
<b>VE306700</b>	TIMM - R200	Capillary thermostat with regulation stem L = 200 mm	-	White
<b>VE307500</b>	TIMM - R cap	Capillary thermostat with regulation external capillary L = 1000 mm	-	White
Code	Model	Description	Power supply	Colour
<b>VE308300</b>	TIMM - B	Capillary thermostat with manual reset stem L = 100 mm	-	White
<b>VE309100</b>	TIMM - RB	Double capillary thermostat with regulation and manual reset stem L = 100 mm	-	White



# Mechanical thermostats

## CONTACT FOR PIPES



### LIQUID EXPANSION

Code	Model	Description	Power supply	Colour
<b>VE025300</b>	Kont	Contact thermostat for pipes	-	White

# Humidistats

## FLUSH-MOUNTING



### 230 V AC POWER SUPPLY

Code	Model	Description	Power supply	Colour
<b>VE379400</b>	Humi	Electronic humidistat (changeable cover)*	230 V AC	White and grey

\* 2 white and grey covers are included in the package with adapters for the most common civil series plates.

## WALL-MOUNTING



### 230 V AC POWER SUPPLY

Code	Model	Description	Power supply	Colour
<b>VE476800</b>	Akuos Bianco	Electronic humidistat backlit touch screen LCD	230 V AC	White
<b>VE477600</b>	Akuos Nero	Electronic humidistat backlit touch screen LCD	230 V AC	Black

# Accessories

## ACCESSORIES

### CHRONOTHERMOSTATS AND THERMOSTATS ACCESSORIES



Code	Model	Description	Power supply	Colour
<b>VN944500</b>	TX. Athena	Plug-in radiofrequency module for Athena and Klio	-	White



Code	Model	Description	Power supply	Colour
<b>VE736500</b>	RX.16A	Flush-mounting remote actuator for radiofrequency devices - 1 relay 16A / 250V AC	230 V AC	White



Code	Model	Description	Power supply	Colour
<b>VE015400</b>	RX1 - 8A	Remote actuator for radiofrequency devices 1 relay 8A/250 V AC - 2 DIN modules	230 V AC	Grey RAL 7035



Code	Model	Description	Power supply	Colour
<b>VE218400</b>	RX2-RF	Modular remote actuator for radiofrequency devices 2 relays 8 A / 250 V AC	230 V AC	Grey RAL 7035



Code	Model	Description	Power supply	Colour
<b>VN943700</b>	RX4 - 8A	Remote actuator for radiofrequency devices 4 relays 8A/250 V AC - 4 DIN modules	230 V AC	Grey RAL 7035



Code	Model	Description	Power supply	Colour
<b>VE443800</b>	RX7-5A	Remote actuator for radiofrequency devices 7 relays 5 A/250 V AC - 4 DIN modules	230 V AC	Grey RAL 7035



Code	Model	Description	Power supply	Colour
<b>VE471900</b>	RX1-8A P	Wall remote actuator for radiofrequency devices 1 relay 8 A/250 V AC	230 V AC	White



Code	Model	Description	Power supply	Colour
<b>VE741500</b>	ThermoPro RF	Remote actuator for radiators for radiofrequency devices	2x1.5 V batteries (AA type)	White



Code	Model	Description	Power supply	Colour
<b>VE742300</b>	PC.ThermoPro	USB programming key for ThermoPro	-	White



Code	Model	Description	Power supply	Colour
<b>VE017000</b>	RX. Ant	Antenna for remote actuator RX1-8A, RX4-8A, RX7-5A and RX1-8A P	-	Black

# Accessories

## ACCESSORIES



### CHRONOTHERMOSTATS AND THERMOSTATS ACCESSORIES

Code	Model	Description	Power supply	Colour
<b>VE470100</b>	AIR	Adapter Bticino LivingLight Air plate for Irìde and Aros	-	-

Code	Model	Description	Power supply	Colour
<b>VN883500</b>	X.Temp	NTC external temperature probe (100 KΩ at 25 °C)	-	-

### CHRONOTHERMOSTATS ACCESSORIES

Code	Model	Description	Power supply	Colour
<b>VE484200</b>	Chronos RF Bianco	3 temperature levels touch screen chronothermostat for radiofrequency *	2x1.5 V batteries (AAA type)	White

<b>VE485900</b>	Chronos RF Nero	3 temperature levels touch screen chronothermostat for radiofrequency *	2x1.5 V batteries (AAA type)	Black
-----------------	-----------------	---	------------------------------	-------

\* This chronothermostat should be combined with a radiofrequency remote actuator (see Accessories).

Code	Model	Description	Power supply	Colour
<b>VE427100</b>	Mithos RF Bianco	3 temperature levels chronothermostat for radiofrequency *	1x1.5 V battery (AA type)	White **

<b>VE425500</b>	Mithos RF Nero	3 temperature levels chronothermostat for radiofrequency *	1x1.5 V battery (AA type)	Black **
-----------------	----------------	--	---------------------------	----------

\* This chronothermostat should be combined with a radiofrequency remote actuator (see Accessories).

\*\* Silver cover is available as optional (see Accessories code VE323200).

Code	Model	Description	Power supply	Colour
<b>VE756900</b>	Mithos GSM RF Bianco	Chronothermostat with GSM interface for radiofrequency *	230V AC	White **

<b>VE757000</b>	Mithos GSM RF Nero	Chronothermostat with GSM interface for radiofrequency *	230V AC	Black **
-----------------	--------------------	--	---------	----------

\* This chronothermostat should be combined with a radiofrequency remote actuator (see Accessories).

\*\* Silver cover is available as optional (see Accessories code VE323200).

Code	Model	Description	Power supply	Colour
<b>VN942900</b>	Athena.Temp	Programmable temperature probe for Athena chronothermostat	2x1.5 V batteries (AAA type)	White

Code	Model	Description	Power supply	Colour
<b>VE468500</b>	FR.Irìde	Silver cover for Irìde	-	Silver

<b>VE601100</b>	FR. Dafne	Silver cover for Dafne	-	Silver
-----------------	-----------	------------------------	---	--------

<b>VE323200</b>	FR.Mithos	Silver cover for Mithos	-	Silver
-----------------	-----------	-------------------------	---	--------



# Accessories

## ACCESSORIES



### THERMOSTATS ACCESSORIES

Code	Model	Description	Power supply	Colour
<b>VE480000</b>	Thalos RF Bianco	Touch screen thermostat for radiofrequency *	2x1.5 V batteries (AAA type)	White
<b>VE481800</b>	Thalos RF Nero	Touch screen thermostat for radiofrequency *	2x1.5 V batteries (AAA type)	Black

\* This thermostat should be combined with a radiofrequency remote actuator (see Accessories)



Code	Model	Description	Power supply	Colour
<b>VE335600</b>	Klio fancoil	Wall mounting thermostat for 3-speed fancoil *	-	White

\* This thermostat should be combined with the remote actuator (see Accessories code VE336400).



Code	Model	Description	Power supply	Colour
<b>VE336400</b>	Rx.fancoil	Remote actuator for Klio fancoil 6 DIN modules	230 V AC	Grey RAL 7035



Code	Model	Description	Power supply	Colour
<b>VE469300</b>	FR.Aros	Silver cover for Aros	-	Silver
<b>VE602900</b>	FR.Keo	Silver cover and knob for Keo-A and Keo-B	-	Silver
<b>VE603700</b>	FR.Keo LCD	Silver cover and knob for Keo-A LCD and Keo-B LCD	-	Silver



# TIME MANAGEMENT



**ELECTROMECHANICAL TIME SWITCHES**

26



**STAIR LIGHT SWITCHES**

28



**DIGITAL TIME SWITCHES**

29



**ASTRONOMICAL TWILIGHT SWITCHES**

30



**TWILIGHT SWITCHES**

31



**MOVEMENT DETECTORS**

33



**HOUR METERS AND PULSE COUNTERS**

34

# Selection guide Time switches

## ELECTROMECHANICAL TIME SWITCHES



**NAPA**



**ELO**



**DUET**



**BIO**



**ARVO**



**AIKO**

	<b>NAPA</b>	<b>ELO</b>	<b>DUET</b>	<b>BIO</b>	<b>ARVO</b>	<b>AIKO</b>
<b>Programming type</b>	Daily/Weekly	Daily/Weekly	Daily/Weekly	Daily/Weekly	Daily/Weekly	Daily/Weekly
<b>Installation</b>	Panel	Din-rail	Din-rail	Din-rail	Din-rail	Din-rail
<b>Dimensions</b>	72x72	1 DIN	2 DIN	2 DIN	2,5 DIN	5 DIN
<b>Charge reserve</b>	200 h (Napa-D, Napa-W, Napa-RD, Napa RW)	150 h	150 h	100 h	150 h	200 h
<b>N.Trippers/ Minimum time step</b>	144 / 10' (Daily) 168 / 1 h (Weekly)	96 / 15' (Elo-D) 84 / 2 h (Elo-W)	48 / 30' (Duet-D) 48 / 3,5 h (Duet-W)	96 / 15' (Bio-D) 84 / 2 h (Bio-W)	96 / 15' (Arvo-D) 84 / 2 h (Arvo-W)	96+84/15'÷2 h

## DIGITAL TIME SWITCHES



**Simply**



**Logik Micro DW**



**Memo DW**



**Memo Y**

	<b>Simply</b>	<b>Logik Micro DW</b>	<b>Memo DW</b>	<b>Memo Y</b>
<b>Programming type</b>	Daily/Weekly	Daily + Weekly	Daily + Weekly	Daily/ Weekly/ Monthly Yearly
<b>Dimensions</b>	2 DIN	1 DIN	2 DIN	2 DIN
<b>Relay</b>	1	1	1 (Memo DW) 2 (Memo DW2)	1 (Memo Y) 2 (Memo Y2)
<b>Minimum time step</b>	30 min	1 min	1 min (ON/OFF) 1 sec (PULSE)	1 min (ON/OFF) 1 sec (PULSE)
<b>Backup battery</b>	Replaceable (RDC 5 years)	Replaceable (RDC 3 years)	Replaceable (RDC 3 years)	Replaceable (RDC 3 years)



## ASTRONOMICAL TWILIGHT SWITCHES



Simply AST



Memo AST1



Memo AST2



Memo AST Plus



AST Lux

	Simply AST	Memo AST1	Memo AST2	Memo AST Plus	AST Lux
<b>Programming type</b>	Daily	Daily	Weekly	Daily/ Weekly	Daily
<b>Power supply</b>	230 V AC	230 V AC	230 V AC	230 V AC	230 V AC
<b>Backup battery</b>	Replaceable (RDC 5 years)	Replaceable (RDC 3 years)	Replaceable (RDC 3 years)	Replaceable (RDC 3 years)	Replaceable (RDC 3 years)
<b>Relay</b>	1	1	2	2	1
<b>Programmable night switching off</b>	■	—	■	—	—
<b>Daytime operation</b>	—	—	—	—	■ (by external probe)

## CONFIGURABLE TIME/ASTRONOMICAL SWITCHES



Memo Bus



Memo KNX

	Memo Bus	Memo KNX
<b>Programming type</b>	Daily/Weekly/ Monthly/ Yearly	Daily/Weekly/ Monthly/ Yearly
<b>Dimensions</b>	3 DIN	3 DIN
<b>Relay</b>	1 (expandable up to 9)	1 (expandable up to 9)
<b>Minimum time step</b>	1 min (ON/OFF) 1 sec (PULSE)	1 min (ON/OFF) 1 sec (PULSE)
<b>Backup battery</b>	Replaceable (RDC 3 years)	Replaceable (RDC 3 years)

# Electromechanical time switches

## 72X72 PANEL / WALL / DIN RAIL MOUNTING



### DAILY

Code	Model	Description	Power supply	Minimum time step
<b>VE049300</b>	NAPA-ED	Daily switch - 72x72 mm Changeover contact 16 A/250 V AC	230 V AC - 50/60 Hz without SFR	10 minutes
<b>VP884100</b>	NAPA-D	Daily switch - 72x72 mm Changeover contact 16 A/250 V AC	230 V AC - 50/60 Hz SFR 200 h	10 minutes



### WEEKLY

Code	Model	Description	Power supply	Minimum time step
<b>VP885800</b>	NAPA-W	Weekly switch - 72x72 mm Changeover contact 16 A/250 V AC	230 V AC - 50/60 Hz SFR 200 h	1 hour

## 72X72 PANEL-MOUNTING TIME SWITCHES



### DAILY

Code	Model	Description	Power supply	Minimum time step
<b>VP886600</b>	NAPA-RD	Daily switch - 72x72 mm Changeover contact 16 A/250 V AC	230 V AC - 50/60 Hz SFR 200 h	10 minutes



### WEEKLY

Code	Model	Description	Power supply	Minimum time step
<b>VP887400</b>	NAPA-RW	Weekly switch - 72x72 mm Changeover contact 16 A/250 V AC	230 V AC - 50/60 Hz SFR 200 h	1 hour

# Electromechanical time switches

## DIN-RAIL SWITCHES

### DAILY



Code	Model	Description	Power supply	Minimum time step
<b>VP877500</b>	ELO-D	Daily switch changeable battery - 1 DIN module NO contact 16 A/250 V AC	230 V AC - 50/60 Hz SFR 150 h	15 minutes



Code	Model	Description	Power supply	Minimum time step
<b>VE087300</b>	BIO-D	Daily switch 2 DIN modules changeover contact 16 A/250 V AC	230 V AC - 50/60 Hz SFR 100 h	15 minutes



Code	Model	Description	Power supply	Minimum time step
<b>VP879100</b>	DUET-D	Daily switch changeable battery - 2 DIN modules changeover contact 16 A/250 V AC	230 V AC - 50/60 Hz SFR 150 h	30 minutes



Code	Model	Description	Power supply	Minimum time step
<b>VP882500</b>	ARVO-D	Daily switch changeable battery - 2.5 DIN modules changeover contact 16 A/250 V AC	230 V AC - 50/60 Hz SFR 150 h	15 minutes

### WEEKLY



Code	Model	Description	Power supply	Minimum time step
<b>VP878300</b>	ELO-W	Weekly switch changeable battery - 1 DIN module NO contact 16 A/250 V AC	230 V AC - 50/60 Hz SFR 150 h	2 hours



Code	Model	Description	Power supply	Minimum time step
<b>VE088100</b>	BIO-W	Weekly switch - 2 DIN modules changeover contact 16 A/250 V AC	230 V AC - 50/60 Hz SFR 100 h	2 hours



Code	Model	Description	Power supply	Minimum time step
<b>VE125100</b>	DUET-W	Weekly switch changeable battery - 2 DIN modules changeover contact 16 A/250 V AC	230 V AC - 50/60 Hz SFR 150 h	3 hours and 30 minutes

# Electromechanical time switches

## DIN-RAIL SWITCHES



### WEEKLY

Code	Model	Description	Power supply	Minimum time step
<b>VP883300</b>	ARVO-W	Weekly switch changeable battery - 2.5 DIN modules changeover contact 16 A/250 V AC	230 V AC - 50/60 Hz SFR 150 h	2 hours
Code	Model	Description	Power supply	Minimum time step
<b>VP881700</b>	AIKO-DW	Daily + Weekly switch synchronised 5 DIN modules changeover contact 16 A/250 V AC	230 V AC - 50/60 Hz SFR 200 h	15 minutes + 2 hours

# Stair light switches

## DIN-RAIL SWITCHES



### ELECTROMECHANICAL SWITCHES

Code	Model	Description	Power supply	Setting time
<b>VE073300</b>	LSM-01	Electromechanical switch 1 DIN module 2 positions selector: timed - ON	230 V AC 50/60 Hz	45 s ÷ 7 minutes

Usable for 3 or 4-wires system.

### ELECTRONIC SWITCHES

Code	Model	Description	Power supply	Setting time
<b>VJ79720000</b>	TE 200	Electronic switch 1 DIN module 2 positions selector: timed - ON	230 V AC 50/60 Hz	1 ÷ 15 minutes

Usable for 3 or 4-wires system.

# Digital time switches

## DIN-RAIL SWITCHES



### DAILY / WEEKLY

Code	Model	Description	Power supply	Relay output
<b>VE512000</b>	Simply D	Daily time switch with simplified ON/OFF programming	230 V AC 50/60 Hz SFR 5 years *	1 monostable 16 A /250 V AC
<b>VE513800</b>	Simply W	Weekly time switch with simplified ON/OFF programming	230 V AC 50/60 Hz SFR 5 years *	1 monostable 16 A /250 V AC

\* The battery can be easily removed from device in order to change or waste it.



Code	Model	Description	Power supply	Relay output
<b>VP888200</b>	Logik Micro DW	Daily/Weekly time switch 1 DIN module ON/OFF programs	230 V AC 50/60 Hz SFR 3 years	1 monostable 16 A /250 V AC



Code	Model	Description	Power supply	Relay output
<b>VE339800</b>	Memo DW	Daily/Weekly time switch 2 DIN modules * ON/OFF, cycle, pulse programs	230 V AC 50/60 Hz SFR 3 years **	1 monostable 16 A /250 V AC
<b>VE341400</b>	Memo DW2	Daily/Weekly time switch 2 DIN modules * ON/OFF, cycle, pulse programs	230 V AC 50/60 Hz SFR 3 years **	2 monostable 16 A /250 V AC

\* Available on request the remote control to memorize and transfer the programs (see Accessories code VE366100).

\*\* The battery can be easily removed from device in order to change or waste it.

### DAILY / WEEKLY / MONTHLY / YEARLY



Code	Model	Description	Power supply	Relay output
<b>VE340600</b>	Memo Y	Daily/Weekly/Monthly/Yearly time switch 2 DIN modules * ON/OFF, cycle, pulse programs	230 V AC 50/60 Hz SFR 3 years **	1 monostable 16 A /250 V AC
<b>VE342200</b>	Memo Y2	Daily/Weekly/Monthly/Yearly time switch 2 DIN modules * ON/OFF, cycle, pulse programs	230 V AC 50/60 Hz SFR 3 years **	2 monostable 16 A /250 V AC

\* Available on request the remote control to memorize and transfer the programs (see Accessories code VE366100).

\*\* The battery can be easily removed from device in order to change or waste it.

# Digital combined switches

## DIN-RAIL SWITCHES

### WITH BUS COMMUNICATION



Code	Model	Description	Power supply	Relay output
<b>VE747400</b>	memo BUS	Configurable astronomical / time switch with bus for GPS module and auxiliary relay modules 3 DIN modules	230 V AC 50/60 Hz	max 9 *
<b>VE747300</b>	memo KNX	Configurable astronomical / time switch with bus for GPS module and auxiliary relay modules and bus Konnex terminals - 3 DIN modules	230 V AC 50/60 Hz	max 9 *

\* One relay on the product, other 4+4 relays on the RX4-8A remote actuators ( optional, see accessories) connected to the bus.

# Astronomical twilight switches

## DIN-RAIL SWITCHES

### FOR NIGHT OPERATION



Code	Model	Description	Power supply	Relay output
<b>VE707600</b>	Simply Ast	Astronomical twilight switch with simplified night programming	230 V AC 50/60 Hz SFR 5 years *	1 monostable 16 A /250 V AC

\* The battery can be easily removed from device in order to change or waste it.

Code	Model	Description	Power supply	Relay output
<b>VE344800</b>	Memo AST1	Astronomical twilight switch with daily fixed program 2 DIN modules *	230 V AC 50/60 Hz SFR 3 years **	1 monostable 16 A /250 V AC
<b>VE343000</b>	Memo AST2	Astronomical twilight switch with weekly night programming 2 DIN modules *	230 V AC 50/60 Hz SFR 3 years **	2 monostable 16 A /250 V AC

\* Available on request the remote control to memorize and transfer the programs (see Accessories code VE366100).

\*\* The battery can be easily removed from device in order to change or waste it.

### FOR NIGHT AND DAYTIME OPERATION



Code	Model	Description	Power supply	Relay output
<b>VE436200</b>	Memo AST plus	Astronomical twilight switch + daily/weekly time switch 2 DIN modules	230 V AC 50/60 Hz SFR 3 years*	2 monostable 16 A /250 V AC

\* The battery can be easily removed from device in order to change or waste it.

Code	Model	Description	Power supply	Relay output
<b>VE148300</b>	AST lux	Astronomical twilight switch with external probe for daytime operation* 2 DIN modules	230 V AC - 50/60 Hz SFR 5 years	1 monostable 16 A /250 V AC

\* The external probe is enabled only from sunrise to sunset time (daytime operation).

# Accessories

## ACCESSORIES FOR ASTRONOMICAL TWILIGHT SWITCHES AND DIGITAL TIME SWITCHES

### ACCESSORIES



Code	Model	Description
<b>VE366100</b>	Memo.RC2	Infrared remote control Ita/Eng/Fra/Deu/Esp



Code	Model	Description	Power supply	Colour
<b>VN943700</b>	RX4 - 8A	Remote actuator for memo BUS and memo KNX 4 relays 8A/250 V AC	230 V AC	Grey RAL 7035



Code	Model	Description
<b>VE747200</b>	GEO-1	GPS module for receiving time and position from satellite for memo BUS and memo KNX

# Twilight switches

## EXTERNAL TWILIGHT SWITCHES

### WALL-MOUNTING / POLE-MOUNTING TWILIGHT SWITCHES IP54



Code	Model	Description	230 V AC connecting load	Sensitivity/ hysteresis
<b>VJ57030000</b>	Velux	Wall-mounting twilight switch	Inc. Lamp 800 W (cosφ 0.8) Fluo. Lamp 360 W (cosφ 0.8)	3 ÷ 70 lux / 4 fixed lux
<b>VJ57110000</b>	Vereg	Wall-mounting twilight switch	Inc. Lamp 800 W (cosφ 0.8) Fluo. Lamp 360 W (cosφ 0.8)	3 ÷ 70 lux / 1 ÷ 10 lux
<b>VJ57370000</b>	Vepal	Wall-mounting / Pole-mounting twilight switch	Inc. Lamp 800 W (cosφ 0.8) Fluo. Lamp 360 W (cosφ 0.8)	3 ÷ 70 lux / 1 ÷ 10 lux



Code	Model	Description	230 V AC connecting load	Sensitivity/ hysteresis
<b>VE503900</b>	Quicklux 3F	3 wires wall/pole-mounting twilight switch with quick connection system	Inc. Lamp 800 W (cosφ 0.8) Fluo. Lamp 360 W (cosφ 0.8)	3 ÷ 70 lux / 4 fixed lux
<b>VE504700</b>	Quicklux 4F	4 wires wall/pole-mounting twilight switch with quick connection system	Inc. Lamp 800 W (cosφ 0.8) Fluo. Lamp 360 W (cosφ 0.8)	3 ÷ 70 lux / 4 fixed lux

# Twilight switches

## EXTERNAL TWILIGHT SWITCHES



### TWILIGHT SWITCHES WITH EXTERNAL PROBE IP65

Code	Model	Description	230 V AC connecting load	Sensitivity range
VJ62300000	CR1DIN	Twilight switch with external probe 1 DIN module	Inc. Lamp 2000 W Fluo. Lamp 400 W	10 ÷ 100 lux
VN150900	Cronolux	Twilight switch with external probe weekly programming 4 DIN modules	Inc. Lamp 1150 W Fluo. Lamp 630 W	1 ÷ 200 lux
VE437000	Memo LUX	Twilight switch with external probe weekly programming 2 DIN modules	Inc. Lamp 1500 W Fluo. Lamp 600 W	5 ÷ 500 lux

## Accessories

### ACCESSORIES FOR TWILIGHT SWITCHES

#### ACCESSORIES



Code	Model	Description
VJ62301111	SIL	External probe of luminous intensity for CR1DIN / Cronolux / AST lux / Memo Lux - IP65
VE380200	SIL-AV	Antivandal external probe of luminous intensity for CR1DIN/Cronolux/AST Lux/Memo Lux IP65



# Movement detectors

## INFRARED DETECTORS



### WALL-MOUNTING DETECTORS

Code	Model	Description	Power supply	230 V AC connecting load
<b>VP401400</b>	Sensor 140 Blister	140° / 8 mt - IP55 movement detector	230 V AC 50/60 Hz	Inc. Lamp 1000 W Halogen Lamp 1000 W
<b>VP402200</b>	Sensor 200 Blister	200° / 8 mt - IP55 movement detector	230 V AC 50/60 Hz	Inc. Lamp 1000 W Halogen Lamp 1000 W
<b>VE212700</b>	Sensor 140	140° / 8 mt - IP55 movement detector	230 V AC 50/60 Hz	Inc. Lamp 1000 W Halogen Lamp 1000 W
<b>VE213500</b>	Sensor 200	200° / 8 mt - IP55 movement detector	230 V AC 50/60 Hz	Inc. Lamp 1000 W Halogen Lamp 1000 W

### CEILING DETECTORS



Code	Model	Description	Power supply	230 V AC connecting load
<b>VP403000</b>	Sensor 360	360° / 7 mt - IP20 movement detector	230 V AC - 50/60 Hz	Inc. Lamp 1000 W Halogen Lamp 1000 W

### FLUSH-MOUNTING DETECTORS



Code	Model	Description	Power supply	230 V AC connecting load
<b>VE215000</b>	Sensor T	360° / 6 mt - IP40 movement detector 1 relay	230 V AC - 50/60 Hz	Inc. Lamp 1500 W Halogen Lamp 230V 1000 W
<b>VE216800</b>	Sensor 2T	360° / 6 mt - IP40 movement detector 2 relays	230 V AC - 50/60 Hz	Inc. Lamp 1500 W Halogen Lamp 230V 1000 W

## ELECTROMAGNETIC WAVES DETECTORS



### WALL-MOUNTING DETECTORS

Code	Model	Description	Power supply	230 V AC connecting load
<b>VE214300</b>	Sensor HF	270° / 6 mt - movement detector	230 V AC - 50 Hz	Inc. Lamp 1000 W Halogen Lamp 230V 500 W

# Hour meters

## PANEL-MOUNTING HOUR METERS

### AC HOUR METERS



Code	Model	Description	Power supply *	Accuracy
<b>VP759500</b>	HMS-024	Hour meter 55x55 mm	24 V AC - 50 Hz	1/100 h
<b>VP755300</b>	HMS-048	Hour meter 55x55 mm	48 V AC - 50 Hz	1/100 h
<b>VP758700</b>	HMS-110	Hour meter 55x55 mm	110 V AC - 50 Hz	1/100 h
<b>VP757900</b>	HMS-230	Hour meter 55x55 mm	230 V AC - 50 Hz	1/100 h
<b>VP756100</b>	HMS-400	Hour meter 55x55 mm	400 V AC - 50 Hz	1/100 h

\* Other power supplies on request



Code	Model	Description	Power supply *	Accuracy
<b>VE155800</b>	HMC-024	Hour meter diam. 58 mm	24 V AC - 50 Hz	1/100 h
<b>VE156600</b>	HMC-230	Hour meter diam. 58 mm	230 V AC - 50 Hz	1/100 h

\* Other power supplies on request



Code	Model	Description	Power supply *	Accuracy
<b>VE157400</b>	HM72-024	Hour meter 72x72 mm	24 V AC - 50 Hz	1/100 h
<b>VE158200</b>	HM72-230	Hour meter 72x72 mm	230 V AC - 50 Hz	1/100 h

\* Other power supplies on request



Code	Model	Description	Power supply *	Accuracy
<b>VE162400</b>	HM30-024	Hour meter 36x24 mm	24 V AC - 50 Hz	1/100 h
<b>VE163200</b>	HM30-110	Hour meter 36x24 mm	110 V AC - 50 Hz	1/100 h
<b>VE102000</b>	HM30-230	Hour meter 36x24 mm	230 V AC - 50 Hz	1/100 h

\* Other power supplies on request

### DC HOUR METERS



Code	Model	Description	Power supply *	Accuracy
<b>VP760300</b>	HMS-1080	Hour meter 55x55 mm	10÷80 V DC	1/10 h

\* Other power supplies on request



Code	Model	Description	Power supply *	Accuracy
<b>VP761100</b>	HMC-1080	Hour meter diam. 58 mm	10÷80 V DC	1/10 h

\* Other power supplies on request



Code	Model	Description	Power supply *	Accuracy
<b>VE159000</b>	HM72-1080	Hour meter 72x72 mm	10÷80 V DC	1/10 h

\* Other power supplies on request



Code	Model	Description	Power supply *	Accuracy
<b>VE164000</b>	HM30-1236	Hour meter 36x24 mm	12÷36 V DC	1/10 h

\* Other power supplies on request

# Hour meters

## DIN-RAIL HOUR METERS



### AC HOUR METERS

Code	Model	Description	Power supply *	Accuracy
<b>VE160800</b>	HMD-024	Hour meter 2 DIN modules	24 V AC - 50 Hz	1/100 h
<b>VP749600</b>	HMD-230	Hour meter 2 DIN modules	230 V AC - 50 Hz	1/100 h

\* Other power supplies on request



### DC HOUR METERS

Code	Model	Description	Power supply *	Accuracy
<b>VE161600</b>	HMD-1236	Hour meter 2 DIN modules	12÷36 V DC	1/10 h

\* Other power supplies on request

# Accessories

## ACCESSORIES FOR HOUR METERS

### ANTIVIBRATION KIT (FOR HMC)



Code	Model	Description
<b>VP762900</b>	KAS	Antishock kit for HMC, 1 rubber ring + 2 plastic rings + 1 metal clip

### ADAPTER



Code	Model	Description
<b>VE466900</b>	HMAD	Adapter from 36x24 mm to 48x24 mm



## GAS AND SAFETY



**FLUSH-MOUNTING GAS DETECTORS**

**40**



**WALL-MOUNTING GAS DETECTORS**

**40**



**DIN-RAIL GAS DETECTORS**

**41**



**SOLENOID VALVES FOR GAS**

**42**



**SAFETY TRANSFORMERS**

**43**



**SOUNDS INDICATORS**

**44**



**LIGHTS INDICATORS**

**45**

# Selection guide Gas and Safety

## GAS DETECTORS



**IRG**



**IRM**



**RGG Wave**



**RGM Wave**



**RGCO Wave**



**SRG**



**SRG4**

	<b>IRG</b>	<b>IRM</b>	<b>RGG Wave</b>	<b>RGM Wave</b>	<b>RGCO Wave</b>	<b>SRG</b>	<b>SRG4</b>
<b>Detected gas type</b>	LPG	Methane	LPG	Methane	Carbon monoxide	LPG/Methane/CO (dependent on the dedicated probe)	LPG/Methane/CO (dependent on the dedicated probe)
<b>Installation</b>	Flush-mounting	Flush-mounting	Wall	Wall	Wall	Din-rail	Din-rail
<b>Power supply</b>	115÷230 V AC	115÷230 V AC	230 V AC	230 V AC	230 V AC	12 V AC/DC	12 V AC/DC
<b>Colour</b>	White/Grey	White/Grey	White/Aluminium	White/Aluminium	White	—	—
<b>Relay</b>	1	1	1	1	1	1	2
<b>Probe</b>	1 (Internal)	1 (Internal)	1 (Internal)	1 (Internal)	1 (Internal)	1 (Remote)	4 (Remote)

## SOLENOID VALVES FOR GAS



**VALV12-NA**



**VALV34-NA**



**VALV1-NA**



**VALV12-NC**



**VALV34-NC**



**VALV1-NC**

	<b>VALV12-NA</b>	<b>VALV34-NA</b>	<b>VALV1-NA</b>	<b>VALV12-NC</b>	<b>VALV34-NC</b>	<b>VALV1-NC</b>
<b>Solenoid valve type</b>	Normally open	Normally open	Normally open	Normally closed	Normally closed	Normally closed
<b>Connection type</b>	Rp 1/2"	Rp 3/4"	Rp 1"	Rp 1/2"	Rp 3/4"	Rp 1"
<b>Power supply*</b>	230 V AC 12 V CC	230 V AC 12 V CC	230 V AC 12 V CC	230 V AC 12 V CC	230 V AC 12 V CC	230 V AC 12 V CC
<b>Reset type</b>	Manual	Manual	Manual	Manual	Manual	Manual
<b>Body</b>	Brass	Brass	Brass	Aluminium	Aluminium	Aluminium

\* For all models are available other power supplies on request (12-24-110 V AC and 24 V CC)

## SAFETY TRANSFORMERS



**TMC 10/12**  
**TMC 15/12**



**TMC 10/24**  
**TMC 15/24**



**TMC 24/24**  
**TMC 30/24**  
**TMC 40/24**



**TMC 63/24**  
**TMC 400 63/24**



**TMD 10/12**  
**TMD 15/12**



**TMD 10/24**  
**TMD 15/24**



**TMD 30/24**

<b>Dimensions</b>	2 DIN	2 DIN	3 DIN	4 DIN	2 DIN	2 DIN	3 DIN
<b>Service type</b>	Continuous	Continuous	Continuous	Continuous	Discontinuous (for Ding-dong sounds)	Discontinuous (for Ding-dong sounds)	Discontinuous (for Ding-dong sounds)
<b>Voltage Primary/Secondary</b>	230 V / 4-8-12 V AC	230 V / 12-24 V AC	230 V / 12-24 V AC	230 V / 12-24 V AC (TMC 63/24) 400 V / 12-24 V AC (TMC 400 63/24)	230 V / 4-8-12 V AC	230 V / 12-24 V AC	230 V / 12-24 V AC
<b>Power</b>	10 VA (TMC 10/12) 15 VA (TMC 15/12)	10 VA (TMC 10/24) 15 VA (TMC 15/24)	24 VA (TMC 24/24) 30 VA (TMC 30/24) 40 VA (TMC 40/24)	63 VA	10 VA (TMD 10/12) 15 VA (TMD 15/12)	10 VA (TMD 10/24) 15 VA (TMD 15/24)	30 VA
<b>Short-circuit protection</b>	–	–	–	■	–	–	–

## SOUNDS INDICATORS



**DR12**



**DR230**



**ZZ12**



**ZZ230**



**Suony**



**Suony2**

<b>Indicator sound</b>	Bell	Bell	Buzzer	Buzzer	Ding-dong sound	Ding-dong sound+ Buzzer
<b>Installation</b>	Din-rail	Din-rail	Din-rail	Din-rail	Wall	Wall
<b>Power supply</b>	12 V AC	230 V AC	12 V AC	230 V AC	230 V AC 12 V AC	230 V AC
<b>Colour</b>	White	White	White	White	White	White

# Gas detectors

## FLUSH-MOUNTING DETECTORS



### LPG

Code	Model	Description	Power supply	Colour
<b>VE295200</b>	IRG	LPG detector (cylinder) *	115÷230 V AC 50/60 Hz	White and Grey
<b>VE314100</b>	Frutto.IRG	Spare part for IRG detector	115÷230 V AC 50/60 Hz	White and Grey
<b>VE317400</b>	Set-I GPL12	IRG detector * + NO Solenoid Valve with 1/2" connection	230 V AC 50/60 Hz	White and Grey
<b>VE318200</b>	Set-I GPL34	IRG detector * + NO Solenoid Valve with 3/4" connection	230 V AC 50/60 Hz	White and Grey

### METHANE

Code	Model	Description	Power supply	Colour
<b>VE294500</b>	IRM	Methane Gas detector *	115÷230 V AC 50/60 Hz	White and Grey
<b>VE313300</b>	Frutto.IRM	Spare part for IRM Detector	115÷230 V AC 50/60 Hz	White and Grey
<b>VE315800</b>	Set-I MET12	IRM detector * + NO Solenoid Valve with 1/2" connection	230 V AC 50/60 Hz	White and Grey
<b>VE316600</b>	Set-I MET34	IRM detector * + NO Solenoid Valve with 3/4" connection	230 V AC 50/60 Hz	White and Grey

(\*) Included in the package white and grey covers with adapters for the most common civil series plates.  
Available on request silver cover for IRG (See Accessories code VE356200) and for IRM (See Accessories code VE355400).

## WALL-MOUNTING DETECTORS



### LPG

Code	Model	Description	Power supply	Colour
<b>VN785200</b>	RGG Wave Bianco	LPG detector (cylinder)	230 V AC 50 Hz	White
<b>VN786000</b>	RGG Wave Aluminium	LPG detector (cylinder)	230 V AC 50 Hz	Aluminum
<b>VN792800</b>	Set-W GPL12	RGG Wave detector + NO solenoid valve with 1/2" connection	230 V AC 50/60 Hz	White
<b>VN793600</b>	Set-W GPL34	RGG Wave detector + NO solenoid valve with 3/4" connection	230 V AC 50/60 Hz	White

### METHANE

Code	Model	Description	Power supply	Colour
<b>VN783700</b>	RGM Wave Bianco	Methane gas detector	230 V AC 50 Hz	White
<b>VN784500</b>	RGM Wave Aluminium	Methane gas detector	230 V AC 50 Hz	Aluminum
<b>VN790200</b>	Set-W MET12	RGM Wave detector + NO solenoid valve with 1/2" connection	230 V AC 50/60 Hz	White
<b>VN791000</b>	Set-W MET34	RGM Wave detector + NO solenoid valve with 3/4" connection	230 V AC 50/60 Hz	White

### CARBON MONOXIDE

Code	Model	Description	Power supply	Colour
<b>VE387700</b>	RGCO Wave	Carbon Monoxide Gas detector	230 V AC 50/60 Hz	White





# Gas detectors

## DIN-RAIL DETECTORS



### METHANE / LPG / CARBON MONOXIDE

Code	Model	Description	Power supply
<b>VE204400</b>	SRG	Control unit for gas with 1 probe input *	12 V AC/DC
<b>VE203600</b>	SRG. 4	Control unit for gas with 4 probe inputs *	12 V AC/DC

\* The control unit must be associated with at least one probe. The model SRG.4 can work simultaneously with probes of different types.

Code	Model	Description	Power supply
<b>VE205100</b>	CH4 Sensor	Methane detection probe for SRG/SRG.4	From the detector (bus)
<b>VE206900</b>	LPG Sensor	LPG detection probe for SRG/SRG.4	From the detector (bus)
<b>VE207700</b>	CO Sensor	Carbon monoxide detection probe for SRG/SRG.4	From the detector (bus)

## PORTABLE DETECTORS



### METHANE/LPG

Code	Model	Description	Power supply
<b>VE381000</b>	GAS Check	Portable detector for LPG and methane gas	2x1.5 V batteries (AA type)

## ACCESSORIES FOR GAS DETECTORS

### ACCESSORIES FOR FLUSH-MOUNTING GAS DETECTORS



Code	Model	Description	Colour
<b>VE355400</b>	Fr.IRM	Silver cover for IRM	Silver
<b>VE356200</b>	Fr.IRG	Silver cover for IRG	Silver

# Solenoid valves for gas

## SOLENOID VALVES WITH RP 1/2"- 3/4" - 1" CONNECTION



### NORMALLY OPEN SOLENOID VALVES

Code	Model	Description	Power supply
<b>VN074100</b>	VALV-12NA	Solenoid valve normally open with connection Rp 1/2"	230 V AC 50/60 Hz
<b>VN073300</b>	VALV-34NA	Solenoid valve normally open with connection Rp 3/4"	230 V AC 50/60 Hz
<b>VN075800</b>	VALV-1NA	Solenoid valve normally open with connection Rp 1"	230 V AC 50/60 Hz
<b>VE169900</b>	VALV-12NA	Solenoid valve normally open with connection Rp 1/2"	12 V DC
<b>VE170700</b>	VALV-34NA	Solenoid valve normally open with connection Rp 3/4"	12 V DC
<b>VE171500</b>	VALV-1NA	Solenoid valve normally open with connection Rp 1"	12 V DC

Other power supplies (12-24-110 V AC and 24 V DC) available on request.

### NORMALLY CLOSED SOLENOID VALVES



Code	Model	Description	Power supply
<b>VN077400</b>	VALV-12NC	Solenoid valve normally closed with connection Rp 1/2"	230 V AC 50/60 Hz
<b>VN076600</b>	VALV-34NC	Solenoid valve normally closed with connection Rp 3/4"	230 V AC 50/60 Hz
<b>VN078200</b>	VALV-1NC	Solenoid valve normally closed with connection Rp 1"	230 V AC 50/60 Hz
<b>VE172300</b>	VALV-12NC	Solenoid valve normally closed with connection Rp 1/2"	12 V DC
<b>VE173100</b>	VALV-34NC	Solenoid valve normally closed with connection Rp 3/4"	12 V DC
<b>VE174900</b>	VALV-1NC	Solenoid valve normally closed with connection Rp 1"	12 V DC

Other power supplies (12-24-110 V AC and 24 V DC) available on request.  
Other threads from DN40 (1 1/2") to DN200 (8") on request.

# Safety transformers

## DIN-RAIL TRANSFORMERS



### CONTINUOUS SERVICE TRANSFORMERS

Code	Model	Description	Prim. voltage / Sec.	Power
<b>VN314100</b>	TMC 10/12	Transformer 2 DIN modules	230 V / 4-8-12 V AC	10 VA
<b>VN315800</b>	TMC 10/24	Transformer 2 DIN modules	230 V / 12-24 V AC	10 VA
<b>VN316600</b>	TMC 15/12	Transformer 2 DIN modules	230 V / 4-8-12 V AC	15 VA
<b>VN317400</b>	TMC 15/24	Transformer 2 DIN modules	230 V / 12-24 V AC	15 VA
<b>VN318200</b>	TMC 24/24	Transformer 3 DIN modules	230 V / 12-24 V AC	24 VA
<b>VN319000</b>	TMC 30/24	Transformer 3 DIN modules	230 V / 12-24 V AC	30 VA
<b>VN320800</b>	TMC 40/24	Transformer 3 DIN modules	230 V / 12-24 V AC	40 VA
<b>VE229100</b>	TMC 63/24	Transformer 4 DIN modules	230 V / 12-24 V AC	63 VA
<b>VE303400</b>	TMC 400 63/24	Transformer 4 DIN modules	400 V / 12-24 V AC	63 VA

### DISCONTINUOUS SERVICE TRANSFORMERS (FOR DOORS BELL)

Code	Model	Description	Prim. voltage / Sec.	Power
<b>VN310900</b>	TMD 10/12	Transformer 2 DIN modules	230 V / 4-8-12 V AC	10 VA
<b>VN311700</b>	TMD 10/24	Transformer 2 DIN modules	230 V / 12-24 V AC	10 VA
<b>VN312500</b>	TMD 15/12	Transformer 2 DIN modules	230 V / 4-8-12 V AC	15 VA
<b>VN313300</b>	TMD 15/24	Transformer 2 DIN modules	230 V / 12-24 V AC	15 VA
<b>VN321600</b>	TMD 30/24	Transformer 3 DIN modules	230 V / 12-24 V AC	30 VA



# Sounds indicators

## BUZZERS AND BELLS



### BUZZERS

Code	Model	Description	Power supply	Colour
<b>VE731600</b>	ZZ 12	Buzzer - 1DIN	12 V AC	White
<b>VE732400</b>	ZZ 230	Buzzer - 1DIN	230 V AC	White



### BELLS

Code	Model	Description	Power supply	Colour
<b>VE733200</b>	DR 12	Bell- 1 DIN	12 V AC	White
<b>VE734000</b>	DR 230	Bell- 1 DIN	230 V AC	White

## DING-DONG SOUNDS

### DING-DONG SOUNDS



Code	Model	Description	Power supply	Colour
<b>VE756500</b>	SUONY	Wall ding-dong sound	230 V AC	White
<b>VE756600</b>	SUONY	Wall ding-dong sound	12 V AC/DC	White
<b>VE756700</b>	SUONY2	Ding-dong sound + wall buzzer	230 V AC	White

# Lights indicators

## FLUSH-MOUNTING EMERGENCY LAMPS



### EXTRACTABLE EMERGENCY LAMP

Code	Model	Description	Power supply	Colour
<b>VE511200</b>	Syrio	Emergency lamp (changeable cover)*	230 V AC 50/60 Hz SFR 2 hours **	White and grey
<b>VE514600</b>	FR.Syrio	Silver cover for Syrio		Silver

\* 2 white and grey covers are included in the package with adapters for the most common civil series plates.

\*\* 2 rechargeable batteries NiMH AAA type 1.2 V 650 mAh. Batteries can be easily removed from device in order to change or waste it.

### NOT EXTRACTABLE EMERGENCY LAMP



Code	Model	Description	Power supply
<b>VE758300</b>	Vega	Emergency lamp compact dimensions (1 module) for module boxes *	230V AC 50/60 Hz SFR 2 hours

\* Included in the package the adapters for the most common civil series plates.



# MEASUREMENT AND CONTROL



MEASUREMENT INSTRUMENTS

48



NETWORK ANALYZERS

51



ENERGY METERS

54



ACCESSORIES

56



CURRENT TRANSFORMERS AND SHUNTS

57



GSM COMMUNICATION INTERFACES

61



ELECTRONIC CONTROL RELAYS

62



ELECTROMECHANICAL CONTROL RELAYS

66



BOOSTING SYSTEMS

70

# Measurement instruments

## SINGLE-PHASE VOLTMETERS - AMMETERS - FREQUENCY METERS

### DIN-RAIL DIGITAL



Code	Model	Description	Power supply	Capacity	Resolution
<b>VM257300</b>	EVA-2DIN	AC ammeter 2 DIN modules	115/230 V AC 50/60 Hz	10 A AC	10 mA
<b>VM198900</b>	EVA-2DIN	AC ammeter 2 DIN modules	115/230 V AC 50/60 Hz	1 A AC	1 mA
<b>VM291200</b>	EVA-4DIN	AC ammeter 4 DIN modules	115/230 V AC 50/60 Hz	10 A AC	10 mA
<b>VM249000</b>	EVA-2DIN	DC ammeter 2 DIN modules	115/230 V AC 50/60 Hz	10 A DC	10 mA
<b>VM266400</b>	EVA-4DIN	DC ammeter 4 DIN modules	115/230 V AC 50/60 Hz	1 A DC	1 mA



Code	Model	Description	Power supply	Capacity	Resolution
<b>VM256500</b>	EVS-2DIN	DC Multiscale ammeter 2 DIN modules	115/230 V AC 50/60 Hz	x/60 mV DC	-
<b>VM268000</b>	EVS-4DIN	DC Multiscale ammeter 4 DIN modules	115/230 V AC 50/60 Hz	x/60 mV DC	-



Code	Model	Description	Power supply	Capacity	Resolution
<b>VM244100</b>	EVV-2DIN	AC voltmeter 2 DIN modules	115/230 V AC 50/60 Hz	100 V AC	0.1 V
<b>VM245800</b>	EVV-2DIN	DC voltmeter 2 DIN modules	115/230 V AC 50/60 Hz	1 V DC	1 mV
<b>VM246600</b>	EVV-2DIN	DC voltmeter 2 DIN modules	115/230 V AC 50/60 Hz	10 V DC	10 mV
<b>VM247400</b>	EVV-2DIN	DC voltmeter 2 DIN modules	115/230 V AC 50/60 Hz	100 V DC	0.1 V
<b>VM248200</b>	EVV-2DIN	DC voltmeter 2 DIN modules	115/230 V AC 50/60 Hz	600 V DC	1 V
<b>VM262300</b>	EVV-4DIN	DC voltmeter 4 DIN modules	115/230 V AC 50/60 Hz	1 V DC	1 mV
<b>VM263100</b>	EVV-4DIN	DC voltmeter 4 DIN modules	115/230 V AC 50/60 Hz	10 V DC	10 mV
<b>VM265600</b>	EVV-4DIN	DC voltmeter 4 DIN modules	115/230 V AC 50/60 Hz	600 V DC	1 V



Code	Model	Description	Power supply	Capacity	Resolution
<b>VM260700</b>	EVM-2DIN	AC Multi-function Voltmeter / Ammeter 2 DIN modules	115/230 V AC 50/60 Hz	600 V AC / CT x/5 A AC	-
<b>VM259900</b>	EVM-4DIN	AC Multi-function Voltmeter / Ammeter 4 DIN modules	115/230 V AC 50/60 Hz	600 V AC / CT x/5 A AC	-



# Measurement instruments

## SINGLE-PHASE VOLTMETERS - AMMETERS - FREQUENCY METERS

### DIN-RAIL DIGITAL



Code	Model	Description	Power supply	Capacity	Resolution
<b>VM258100</b>	EVF-2DIN	Frequency meter 2 DIN modules	115/230 V AC 50/60 Hz	100 Hz	0.1 Hz
<b>VM292000</b>	EVF-4DIN	Frequency meter 4 DIN modules	115/230 V AC 50/60 Hz	100 Hz	0.1 Hz



Code	Model	Description	Power supply	Capacity	Resolution
<b>VE149100</b>	EV2M - 2 DIN	AC voltmeter / ammeter 2 DIN modules	230V AC 50/60 Hz	600 V AC / CT x/5 A AC	-
<b>VE196200</b>	EV2M - 4 DIN	AC voltmeter / ammeter 4 DIN modules	230V AC 50/60 Hz	600 V AC / CT x/5 A AC	-

### PANEL-MOUNTING DIGITAL



Code	Model	Description	Power supply	Capacity	Resolution
<b>VM323300</b>	EVA-R	AC ammeter 72x72 mm	115/230 V AC 50/60 Hz	1 A AC	1 mA
<b>VM324100</b>	EVA-R	AC ammeter 72x72 mm	115/230 V AC 50/60 Hz	10 A AC	10 mA
<b>VM320900</b>	EVA-R	DC ammeter 72x72 mm	115/230 V AC 50/60 Hz	1 A DC	1 mA
<b>VM321700</b>	EVA-R	DC ammeter 72x72 mm	115/230 V AC 50/60 Hz	10 A DC	10 mA



Code	Model	Description	Power supply	Capacity	Resolution
<b>VM322500</b>	EVS-R	DC multiscala ammeter 72x72 mm	115/230 V AC 50/60 Hz	x/60 mV DC	-



Code	Model	Description	Power supply	Capacity	Resolution
<b>VM295300</b>	EVV-R	DC voltmeter 72x72 mm	115/230 V AC 50/60 Hz	1 V DC	1 mV
<b>VM296100</b>	EVV-R	DC voltmeter 72x72 mm	115/230 V AC 50/60 Hz	10 V DC	10 mV
<b>VM297900</b>	EVV-R	DC voltmeter 72x72 mm	115/230 V AC 50/60 Hz	100 V DC	0.1 V
<b>VM298700</b>	EVV-R	DC voltmeter 72x72 mm	115/230 V AC 50/60 Hz	600 V DC	1 V

# Measurement instruments

## SINGLE-PHASE VOLTMETERS - AMMETERS - FREQUENCY METERS

### PANEL-MOUNTING DIGITAL



Code	Model	Description	Power supply	Capacity	Resolution
<b>VM293800</b>	EVM-R	AC multi-function voltmeter / ammeter 72x72 mm	115/230 V AC 50/60 Hz	600 V AC / CT x/5 A AC	-
<b>VM293802</b>	EVM-R	AC multi-function voltmeter / ammeter 72x72 mm	24 V AC 50/60 Hz	600 V AC / CT x/5 A AC	-



Code	Model	Description	Power supply	Capacity	Resolution
<b>VM325800</b>	EVF-R	Frequency meter 72x72 mm	115/230 V AC 50/60 Hz	100 Hz	0.1 Hz



Code	Model	Description	Power supply	Capacity	Resolution
<b>VE195400</b>	EV2M-R	AC Voltmeter - Ammeter 72x72 mm	230 V AC 50/60 Hz	600 V AC / CT x/5 A AC	-

## THREE-PHASE MULTI-FUNCTION METERS

### DIN-RAIL DIGITAL



Code	Model	Description	Power supply	Capacity
<b>VE333100</b>	EV3M-D	Digital multi-function meter 4 DIN modules	230 V AC 50/60 Hz	3x300 (500) V AC CT x/5 A AC

### PANEL-MOUNTING DIGITAL



Code	Model	Description	Power supply	Capacity
<b>VE334900</b>	EV3M-R	Digital multi-function meter 72x72 mm	230 V AC 50/60 Hz	3x300 (500) V AC CT x/5 A AC

# Measurement instruments with relay

## SINGLE-PHASE VOLTMETERS - AMMETERS WITH MAXIMUM OR MINIMUM RELAY

### DIN-RAIL DIGITAL



Code	Model	Description	Power supply	Capacity
<b>VM331600</b>	EVR-D	AC multi-function voltmeter / ammeter 4 DIN modules - 1 relay 10A/250 V AC	115÷230 V AC 50/60 Hz	600 V AC / CT x/5 A AC

### PANEL-MOUNTING DIGITAL



Code	Model	Description	Power supply	Capacity
<b>VM332400</b>	EVR-R	AC multi-function voltmeter / ammeter 72x72 mm - 1 relay 10A/250 V AC	115÷230 V AC 50/60 Hz	600 V AC / CT x/5 A AC
<b>VM332402</b>	EVR-R	AC multi-function voltmeter / ammeter 72x72 mm - 1 relay 10A/250 V AC	24 V AC 50/60 Hz	600 V AC / CT x/5 A AC

# Network analyzers

## SINGLE-PHASE NETWORK ANALYZERS - 230 V AC

### DIN-RAIL DIGITAL



Code	Model	Description	Power supply	Capacity
<b>VE008900</b>	ADR-D 230 D22 Spot	Network analyzer 3 DIN modules backlit LCD	230 V AC 50/60 Hz	300 V AC / 22.5 A AC



Code	Model	Description	Power supply	Capacity
<b>VE009700</b>	ADR-D 230 D22 Modbus	Uninsulated network analyzer * 3 DIN modules backlit LCD RS-485 serial output	230 V AC 50/60 Hz	300 V AC / CT x/5 A AC

\* Caution: the CT secondary circuit can not be connected to earth.



Code	Model	Description	Power supply	Capacity
<b>VE035200</b>	ADR-D 230 D63	Network analyzer 3 DIN modules backlit LCD - pulse output	230 V AC 50/60 Hz	230 V AC / 63 A AC through cable

# Network analyzers

## THREE-PHASE NETWORK ANALYZERS - 400 V AC

### DIN-RAIL DIGITAL



Code	Model	Description	Power supply	Capacity
<b>VN562500</b>	ADR-D Spot	Network analyzer 4 DIN modules backlit LCD	230 V AC 50/60 Hz	3x300 (500) V AC CT x/5 A AC
<b>VE071700</b>	ADR-D E Spot	Uninsulated network analyzer* 4 DIN modules backlit LCD	230 V AC 50/60 Hz	3x300 (500) V AC CT x/5 A AC



Code	Model	Description	Power supply	Capacity
<b>VN563300</b>	ADR-D	Network analyzer 4 DIN modules backlit LCD RS-485 serial output	230 V AC 50/60 Hz	3x300 (500) V AC CT x/5 A AC
<b>VE281200</b>	ADR-D E	Uninsulated network analyzer* 4 DIN modules backlit LCD RS-485 serial output	230 V AC 50/60 Hz	3x300 (500) V AC CT x/5 A AC



Code	Model	Description	Power supply	Capacity
<b>VN795100</b>	ADR-D Out	Network analyzer 4 DIN modules backlit LCD 2 relays 2A/250 V AC	230 V AC 50/60 Hz	3x300 (500) V AC CT x/5 A AC



Code	Model	Description	Power supply	Capacity
<b>VE045100</b>	ADR - D 400 D90	Network analyzer 7 DIN modules backlit LCD RS-485 serial output	400 V AC 50/60 Hz	3x300 (500) V AC / 90 A through cable



Code	Model	Description	Power supply	Capacity
<b>VN812400</b>	ADR-D Vision	Network analyzer 9 DIN modules LED display	115÷230 V AC 50/60 Hz 140÷300 V DC	3x300 (500) V AC CT x/5 A AC

\* Caution: the CT secondary circuit can not be connected to earth.

# Network analyzers

## THREE-PHASE NETWORK ANALYZERS - 400 V AC

### PANEL-MOUNTING DIGITAL



Code	Model	Description	Power supply	Capacity
<b>VN560900</b>	ADR-R Spot	Network analyzer 72x72 mm backlit LCD	230 V AC 50/60 Hz	3x300 (500) V AC CT x/5 A AC
<b>VE279600</b>	ADR-R E Spot	Uninsulated network analyzer* 72x72 mm backlit LCD	230 V AC 50/60 Hz	3x300 (500) V AC CT x/5 A AC



Code	Model	Description	Power supply	Capacity
<b>VN561700</b>	ADR-R	Network analyzer - 72x72 mm backlit LCD RS-485 serial output	230 V AC 50/60 Hz	3x300 (500) V AC CT x/5 A AC
<b>VE280400</b>	ADR-R E	Uninsulated network analyzer* 72x72 mm - backlit LCD RS-485 serial output	230 V AC 50/60 Hz	3x300 (500) V AC CT x/5 A AC



Code	Model	Description	Power supply	Capacity
<b>VN794400</b>	ADR-R Out	Network analyzer - 72x72 mm backlit LCD 2 relays 2A/250 V AC	230 V AC 50/60 Hz	3x300 (500) V AC CT x/5 A AC



Code	Model	Description	Power supply	Capacity
<b>VN811600</b>	ADR-R Vision	Network analyzer 96x96 mm LED display	115÷230 V AC 50/60 Hz 140÷300 V DC	3x300 (500) V AC CT x/5 A AC

\* Caution: the CT secondary circuit can not be connected to earth.

## ACCESSORIES

### SOFTWARE FOR NETWORK ANALYZERS



Code	Model	Description
<b>VN564100</b>	ADR-View	USB / RS485 interface + software for network analyzers

Code	Model	Description
<b>VE304200</b>	LAN-485	LAN/RS-485 interface + Software *

\* Software ADR-View NET is available on request for network installations.

# Energy meters

## SINGLE-PHASE ELECTRONIC METERS - 230 V AC

### DIN-RAIL METERS



Code	Model	Description	Power supply	Capacity
<b>VE321600</b>	Energy-230 Micro	Single-phase active energy meter 1 DIN module - pulse output	230 V AC 50/60 Hz	25 A



Code	Model	Description	Power supply	Capacity
<b>VE758400</b>	Energy-230 Micro LCD	Single-phase active energy meter 1 DIN module - pulse output	230 V AC 50/60 Hz	25 A



Code	Model	Description	Power supply	Capacity
<b>VN960100</b>	Energy-230 LC	Single-phase active energy meter 2 DIN modules	230 V AC 50/60 Hz	22.5 A



Code	Model	Description	Power supply	Capacity
<b>VE299400</b>	Energy-230 M LC	Single-phase active energy meter 2 DIN modules MID certified	230 V AC 50/60 Hz	25 A

<b>VN950200</b>	Energy-230 M	Single-phase active energy meter 2 DIN modules - pulse output MID certified	230 V AC 50/60 Hz	25 A
-----------------	--------------	---	-------------------	------



Code	Model	Description	Power supply	Capacity
<b>VE044400</b>	Energy-230 D22	Single-phase active energy meter 2 DIN modules LCD	230 V AC 50/60 Hz	22.5 A

<b>VE055000</b>	Energy-230 D22 Pulse	Single-phase active energy meter 2 DIN modules - pulse output LCD	230 V AC 50/60 Hz	22.5 A
-----------------	----------------------	---	-------------------	--------



Code	Model	Description	Power supply	Capacity
<b>VN973400</b>	Energy-230 D63	Single-phase active energy meter 3 DIN modules pulse output	230 V AC 50/60 Hz	63 A through cable



Code	Model	Description	Power supply	Capacity
<b>VN950289</b>	Energy-230 TAI	Single-phase active energy meter 4 DIN modules pulse output	230 V AC 50/60 Hz	CT x/5 A AC

Selectable transformation rate (for CT x/5 A): 5-10-25-50-75-100-125-150-200-250-300-400-500-600-800-1000/5 A.

# Energy meters

## SINGLE-PHASE ELECTRONIC METERS - 230 V AC

### PANEL-MOUNTING METERS



Code	Model	Description	Power supply	Capacity
<b>VE012100</b>	Energy-230R TAI	Single-phase active energy meter 72x72 mm pulse output	230 V AC 50/60 Hz	CT x/5 A AC

Selectable transformation rate (for CT x/5 A): 5-10-25-50-75-100-125-150-200-250-300-400-500-600-800-1000/5 A.

## THREE-PHASE ELECTRONIC METERS - 400 V AC

### DIN-RAIL METERS



Code	Model	Description	Power supply	Capacity
<b>VN964300</b>	Energy-400 PWR	Three-phase active energy meter uninsulated * 4 DIN modules - pulse output	400 V AC 50/60 Hz	CT x/5 A AC

Selectable transformation rate (for CT x/5 A): 5-10-25-50-75-100-125-150-200-250-300-400-500-600-800-1000/5 A.  
\* Caution: the CT secondary circuit CAN NOT BE CONNECTED TO EARTH.



Code	Model	Description	Power supply	Capacity
<b>VN963500</b>	Energy-400 M PWRi	Three-phase active energy meter 4 DIN modules - pulse output MID certified	400 V AC 50/60 Hz	CT x/5 A AC

Selectable transformation rate (for CT x/5 A): 5-10-25-50-75-100-125-150-200-250-300-400-500-600-800-1000/5 A.



Code	Model	Description	Power supply	Capacity
<b>VE119400</b>	Energy-400 D PWR	Three-phase active energy meter uninsulated * 4 DIN modules - pulse output - LCD	400 V AC 50/60 Hz	CT x/5 A AC

Code	Model	Description	Power supply	Capacity
<b>VE120200</b>	Energy-400 D PWRi	Three-phase active energy meter 4 DIN modules pulse output - LCD	400 V AC 50/60 Hz	CT x/5 A AC

Selectable transformation rate: from 5/5 A up to 1000/5 A  
\* Caution: the CT secondary circuit CAN NOT BE CONNECTED TO EARTH.



Code	Model	Description	Power supply	Capacity
<b>VN971800</b>	Energy-400 PAR	Three-phase active and reactive energy meter two pulse outputs 4 DIN modules	400 V AC 50/60 Hz	CT x/5 A AC

Selectable transformation rate (for CT x/5 A): 5-10-25-50-75-100-125-150-200-250-300-400-500-600-800-1000/5 A.



Code	Model	Description	Power supply	Capacity
<b>VN984100</b>	Energy-400 D90	Three-phase active energy meter 7 DIN modules pulse output - LCD	400 V AC 50/60 Hz	90 A through cable

# Energy meters

## THREE-PHASE ELECTRONIC METERS - 400 V AC

### PANEL-MOUNTING METERS



Code	Model	Description	Power supply	Capacity
<b>VE010500</b>	Energy-400 R PWR	Three-phase active energy meter uninsulated * 72x72 mm - pulse output	400 V AC 50/60 Hz	CT x/5 A AC
<b>VE011300</b>	Energy-400 R PWRi	Three-phase active energy meter 72x72 mm - pulse output	400 V AC 50/60 Hz	CT x/5 A AC

Selectable transformation rate (for CT x/5 A): 5-10-25-50-75-100-125-150-200-250-300-400-500-600-800-1000/5 A.  
\* Caution: the CT secondary circuit CAN NOT BE CONNECTED TO EARTH.

## THREE-PHASE ELECTRONIC METERS - 230 V AC

### DIN-RAIL METERS



Code	Model	Description	Power supply	Capacity
<b>VN966800</b>	Energy-3x130 PWR	Three-phase active energy meter uninsulated * 4 DIN modules - pulse output	230 V AC 50/60 Hz	CT x/5 A AC
<b>VN967600</b>	Energy-3x130 PWRi	Three-phase active energy meter 4 DIN modules - pulse output	230 V AC 50/60 Hz	CT x/5 A AC

Selectable transformation rate (for CT x/5 A): 5-10-25-50-75-100-125-150-200-250-300-400-500-600-800-1000/5 A.  
\* Caution: the CT secondary circuit CAN NOT BE CONNECTED TO EARTH.

## ACCESSORIES

### SOFTWARE FOR ENERGY METERS



Code	Model	Description
<b>VN970000</b>	Energy-View	USB/RS 485 interface + software for energy meters

### COMMUNICATION MODULES



Code	Model	Description	Power supply
<b>VN905600</b>	CLIP-485	Concentrator module * for Energy meters - 4 DIN modules	230 V AC 50/60 Hz

\* 8 inputs for the signals coming from energy meters. Output on RS-485 serial line operating with MODBUS protocol.

Code	Model	Description
<b>VE304200</b>	LAN-485	LAN/RS-485 interface + Software*

\* Energy-view NET software on request for network installations.



Code	Model	Description	Power supply
<b>VE460200</b>	MODEM-485	GSM/RS-485 interface + Software*	230 V AC 50/60 Hz

\* Energy-View MODEM software on request for remote installations.



# Current transformers and shunts

## TRANSFORMERS FOR AC INSTRUMENTS

### WOUND PRIMARY



Code	Model	Capacity	Accuracy
<b>VJ31462005</b>	TU3b	10/5 A	cl. 1 (20 VA)
<b>VJ31792005</b>	TU3b	10/5 A	cl. 0.5 (10 VA)
<b>VJ31792105</b>	TU3b	15/5 A	cl. 0.5 (10 VA)
<b>VJ31532305</b>	TU3b	25/5 A	cl. 1 (20 VA)
<b>VJ31872305</b>	TU3b	25/5 A	cl. 0.5 (10 VA)

Voltage range: 600V max

### BYPASS BAR



Code	Model	Capacity	Accuracy	Bar size	Cable size
<b>VE226700</b>	TA	50/5 A	cl. 2 (1 VA)	30x10 mm	diam. 30 mm
<b>VE227500</b>	TA	60/5 A	cl. 2 (1.5 VA)	30x10 mm	diam. 30 mm
<b>VE230900</b>	TA	100/5 A	cl. 2 (2.5 VA)	30x10 mm	diam. 30 mm
<b>VE231700</b>	TA	150/5 A	cl. 2 (3 VA)	30x10 mm	diam. 30 mm
<b>VE232500</b>	TA	200/5 A	cl. 2 (3 VA)	30x10 mm	diam. 30 mm
<b>VE233300</b>	TA	250/5 A	cl. 2 (3 VA)	30x10 mm	diam. 30 mm



Code	Model	Capacity	Accuracy	Bar size	Cable size
<b>VM700221</b>	TU 20	50/1 A	cl. 1 (0.5 VA) cl. 3 (1 VA)	20x10 mm	diam. 16 mm
<b>VM700200</b>	TU 20	50/5 A	cl. 1 (0.5 VA) - cl. 3 (1 VA)	20x5 mm	diam. 16 mm
<b>VM701000</b>	TU 20	60/5 A	cl. 1 (1 VA) - cl. 3 (2 VA)	20x5 mm	diam. 16 mm
<b>VM702800</b>	TU 20	75/5 A	cl. 1 (1.5 VA) - cl. 3 (2.5 VA)	20x5 mm	diam. 16 mm
<b>VM703600</b>	TU 20	100/5 A	cl. 1 (2.5 VA) - cl. 3 (3.75 VA)	20x5 mm	diam. 16 mm
<b>VM704400</b>	TU 20	125/5 A	cl. 1 (3.75 VA) - cl. 3 (5 VA)	20x5 mm	diam. 16 mm



Code	Model	Capacity	Accuracy	Bar size	Cable size
<b>VM705100</b>	TU 30	150/5 A	cl. 0.5 (1.5 VA) - cl. 1 (2.5 VA) cl. 3 (3.75 VA)	30x10 mm	diam. 22 mm
<b>VM706900</b>	TU 30	200/5 A	cl. 0.5 (2.5 VA) - cl. 1 (3.75 VA) cl. 3 (5 VA)	30x10 mm	diam. 22 mm
<b>VM707700</b>	TU 30	250/5 A	cl. 0.5 (3.75 VA) - cl. 1 (5 VA) cl. 3 (7.5 VA)	30x10 mm	diam. 22 mm
<b>VM708500</b>	TU 30	300/5 A	cl. 0.5 (3.75 VA) - cl. 1 (5 VA) cl. 3 (7.5 VA)	30x10 mm	diam. 22 mm
<b>VM709300</b>	TU 30	400/5 A	cl. 0.5 (3.75 VA) - cl. 1 (5 VA) cl. 3 (7.5 VA)	30x10 mm	diam. 22 mm
<b>VM710100</b>	TU 30	500/5 A	cl. 0.5 (5 VA) - cl. 1 (7.5 VA) cl. 3 (10 VA)	30x10 mm	diam. 22 mm
<b>VM711900</b>	TU 30	600/5 A	cl. 0.5 (5 VA) - cl. 1 (7.5 VA) cl. 3 (10 VA)	30x10 mm	diam. 22 mm

# Current transformers and shunts

## TRANSFORMERS FOR AC INSTRUMENTS

### BYPASS BAR



Code	Model	Capacity	Accuracy	Bar size	Cable size
<b>VM712700</b>	TU 40	50/5 A	cl. 1 (0.75 VA) - cl. 3 (1.5 VA)	40x10 mm	diam. 30 mm
<b>VM713500</b>	TU 40	60/5 A	cl. 1 (1.25 VA) - cl. 3 (2 VA)	40x10 mm	diam. 30 mm
<b>VM714300</b>	TU 40	75/5 A	cl. 1 (2 VA) - cl. 3 (3.75 VA)	40x10 mm	diam. 30 mm
<b>VM715000</b>	TU 40	100/5 A	cl. 0.5 (1 VA) - cl. 1 (3 VA) cl. 3 (5 VA)	40x10 mm	diam. 30 mm
<b>VM716800</b>	TU 40	125/5 A	cl. 0.5 (2.5 VA) - cl. 1 (3.75 VA) cl. 3 (5 VA)	40x10 mm	diam. 30 mm
<b>VM717621</b>	TU 40	150/1 A	cl. 0.5 (3.75 VA) - cl. 1 (5 VA) cl. 3 (7.5 VA)	40x10 mm	diam. 30 mm
<b>VM717600</b>	TU 40	150/5 A	cl. 0.5 (3.75 VA) - cl. 1 (5 VA) cl. 3 (7.5 VA)	40x10 mm	diam. 30 mm
<b>VM718400</b>	TU 40	200/5 A	cl. 0.5 (3.75 VA) - cl. 1 (5 VA) cl. 3 (7.5 VA)	40x10 mm	diam. 30 mm
<b>VM719221</b>	TU 40	250/1 A	cl. 0.5 (5 VA) - cl. 1 (7.5 VA) cl. 3 (10 VA)	40x10 mm	diam. 30 mm
<b>VM719200</b>	TU 40	250/5 A	cl. 0.5 (5 VA) - cl. 1 (7.5 VA) cl. 3 (10 VA)	40x10 mm	diam. 30 mm
<b>VM720000</b>	TU 40	300/5 A	cl. 0.5 (7.5 VA) - cl. 1 (10 VA) cl. 3 (15 VA)	40x10 mm	diam. 30 mm
<b>VM721800</b>	TU 40	400/5 A	cl. 0.5 (10 VA) - cl. 1 (15 VA) cl. 3 (20 VA)	40x10 mm	diam. 30 mm
<b>VM722600</b>	TU 40	500/5 A	cl. 0.5 (10 VA) - cl. 1 (15 VA) cl. 3 (20 VA)	40x10 mm	diam. 30 mm
<b>VM723400</b>	TU 40	600/5 A	cl. 0.5 (10 VA) - cl. 1 (15 VA) cl. 3 (20 VA)	40x10 mm	diam. 30 mm
<b>VM724200</b>	TU 40	800/5 A	cl. 0.5 (15 VA) - cl. 1 (20 VA) cl. 3 (30 VA)	40x10 mm	diam. 30 mm
<b>VM725900</b>	TU 40	1000/5 A	cl. 0.5 (15 VA) - cl. 1 (20 VA) cl. 3 (30 VA)	40x10 mm	diam. 30 mm



Code	Model	Capacity	Accuracy	Bar size	Cable size
<b>VM730900</b>	TUC 60	400/5 A	cl. 0.5 (15 VA) - cl. 1 (20 VA) cl. 3 (30 VA)	60x10 mm	diam. 51 mm
<b>VM731700</b>	TUC 60	500/5 A	cl. 0.5 (15 VA) - cl. 1 (20 VA) cl. 3 (30 VA)	60x10 mm	diam. 51 mm
<b>VM732500</b>	TUC 60	600/5 A	cl. 0.5 (15 VA) - cl. 1 (20 VA) cl. 3 (30 VA)	60x10 mm	diam. 51 mm
<b>VM734100</b>	TUC 60	800/5 A	cl. 0.5 (15 VA) - cl. 1 (20 VA) cl. 3 (30 VA)	60x10 mm	diam. 51 mm
<b>VM735800</b>	TUC 60	1000/5 A	cl. 0.5 (15 VA) - cl. 1 (20 VA) cl. 3 (30 VA)	60x10 mm	diam. 51 mm
<b>VM736600</b>	TUC 60	1200/5 A	cl. 0.5 (15 VA) - cl. 1 (20 VA) cl. 3 (30 VA)	60x10 mm	diam. 51 mm
<b>VM737400</b>	TUC 60	1500/5 A	cl. 0.5 (15 VA) - cl. 1 (20 VA) cl. 3 (30 VA)	60x10 mm	diam. 51 mm
<b>VM738200</b>	TUC 60	2000/5 A	cl. 0.5 (15 VA) - cl. 1 (20 VA) cl. 3 (30 VA)	60x10 mm	diam. 51 mm

# Current transformers and shunts

## TRANSFORMERS FOR AC INSTRUMENTS

### BYPASS BAR



Code	Model	Capacity	Accuracy	Bar size	Cable size
<b>VM740800</b>	TUC 80	400/5 A	cl. 0.5 (15 VA) - cl. 1 (20 VA) cl. 3 (30 VA)	80x30 mm	diam. 65 mm
<b>VM741600</b>	TUC 80	500/5 A	cl. 0.5 (15 VA) - cl. 1 (20 VA) cl. 3 (30 VA)	80x30 mm	diam. 65 mm
<b>VM742400</b>	TUC 80	600/5 A	cl. 0.5 (15 VA) - cl. 1 (20 VA) cl. 3 (30 VA)	80x30 mm	diam. 65 mm
<b>VM743200</b>	TUC 80	750/5 A	cl. 0.5 (15 VA) - cl. 1 (20 VA) cl. 3 (30 VA)	80x30 mm	diam. 65 mm
<b>VM744000</b>	TUC 80	800/5 A	cl. 0.5 (15 VA) - cl. 1 (20 VA) cl. 3 (30 VA)	80x30 mm	diam. 65 mm
<b>VM745700</b>	TUC 80	1000/5 A	cl. 0.5 (15 VA) - cl. 1 (20 VA) cl. 3 (30 VA)	80x30 mm	diam. 65 mm
<b>VM746500</b>	TUC 80	1200/5 A	cl. 0.5 (15 VA) - cl. 1 (20 VA) cl. 3 (30 VA)	80x30 mm	diam. 65 mm
<b>VM747300</b>	TUC 80	1500/5 A	cl. 0.5 (15 VA) - cl. 1 (20 VA) cl. 3 (30 VA)	80x30 mm	diam. 65 mm
<b>VM748100</b>	TUC 80	2000/5 A	cl. 0.5 (15 VA) - cl. 1 (20 VA) cl. 3 (30 VA)	80x30 mm	diam. 65 mm
<b>VM749900</b>	TUC 80	2500/5 A	cl. 0.5 (15 VA) - cl. 1 (20 VA) cl. 3 (30 VA)	80x30 mm	diam. 65 mm



Code	Model	Capacity	Accuracy	Bar size	Cable size
<b>VJ35754005</b>	TL2	1000/5 A	cl. 0.5 (20 VA) - cl. 1 (30 VA) cl. 3 (45 VA)	100X20 mm	diam. 20 mm
<b>VJ35834205</b>	TL2	1500/5 A	cl. 0.5 (30 VA) - cl. 1 (45 VA) cl. 3 (60 VA)	100X20 mm	diam. 20 mm
<b>VJ36174405</b>	TL3	2500/5 A	cl. 0.5 (25 VA) - cl. 1 (30 VA) cl. 3 (45 VA)	100X30 mm	diam. 30 mm
<b>VJ36414505</b>	TL4	3000/5 A	cl. 0.5 (20 VA) - cl. 1 (30 VA) cl. 3 (45 VA)	100X60 mm	diam. 60 mm

# Current transformers and shunts

## SHUNTS FOR DC INSTRUMENTS

### FORMAT 1 ELEMENTS



Code	Model	Capacity	Accuracy	Nominal voltage drop
<a href="#">VJ36741322</a>	Shunt	4 A	cl 0.5	60 mV
<a href="#">VJ36741422</a>	Shunt	5 A	cl 0.5	60 mV
<a href="#">VJ36741522</a>	Shunt	6 A	cl 0.5	60 mV
<a href="#">VJ36742022</a>	Shunt	10 A	cl 0.5	60 mV
<a href="#">VJ36742222</a>	Shunt	20 A	cl 0.5	60 mV
<a href="#">VJ36742322</a>	Shunt	25 A	cl 0.5	60 mV
<a href="#">VJ36742622</a>	Shunt	50 A	cl 0.5	60 mV
<a href="#">VJ36742722</a>	Shunt	60 A	cl 0.5	60 mV
<a href="#">VJ36742822</a>	Shunt	80 A	cl 0.5	60 mV
<a href="#">VJ36742922</a>	Shunt	100 A	cl 0.5	60 mV
<a href="#">VJ36743122</a>	Shunt	150 A	cl 0.5	60 mV

### FORMAT 2 ELEMENTS



Code	Model	Capacity	Accuracy	Nominal voltage drop
<a href="#">VJ36823222</a>	Shunt	200 A	cl 0.5	60 mV
<a href="#">VJ36823322</a>	Shunt	250 A	cl 0.5	60 mV
<a href="#">VJ36903422</a>	Shunt	300 A	cl 0.5	60 mV
<a href="#">VJ36903522</a>	Shunt	400 A	cl 0.5	60 mV
<a href="#">VJ37083622</a>	Shunt	500 A	cl 0.5	60 mV
<a href="#">VJ37083722</a>	Shunt	600 A	cl 0.5	60 mV
<a href="#">VJ37244122</a>	Shunt	1200 A	cl 0.5	60 mV
<a href="#">VJ37244222</a>	Shunt	1500 A	cl 0.5	60 mV
<a href="#">VJ37324422</a>	Shunt	2500 A	cl 0.5	60 mV

# GSM communication interfaces

## DIN-RAIL CONTROL RELAYS



### GSM CONTROL RELAY

Code	Model	Description	Power supply	Output
<b>VE245700</b>	TRILLO	GSM interface with backup battery 4 DIN modules	230 V AC 50/60 Hz	1 relay 8 A/250 V AC
<b>VE285300</b>	GWI 2120B	GSM interface with 2 digital inputs and 1 analog input and USB port * with backup battery 4 DIN modules	12÷24 V AC/DC	2 relays 8 A/250 V AC

\* Software available for the configuration by PC via cable.

### GSM CONTROL RELAY FOR PHOTOVOLTAIC SYSTEMS



Code	Model	Description
<b>KT018000</b>	Tlc-solar 230	Kit for single-phase solar systems remote control (15 kW) *
<b>KT018500</b>	Tlc-solar 400	Kit for three-phase solar systems remote control (69 kW) *
<b>KT021500</b>	Tlc-solar 400 TA	Kit for three-phase solar systems remote control (690 kW) *

\* The kit includes GWI SOLAR, the radiation sensor Solar.Lux, power transformer TMC 10/12 and, depending from the model, an energy meter.

## ACCESSORIES



Code	Model	Description
<b>VE326500</b>	GWI SOLAR	GSM interface for photovoltaic systems 4 DIN modules



Code	Model	Description	Power supply	Output
<b>VE269700</b>	GSM.Ant	GSM antenna with cable L = 3 m	-	-



Code	Model	Description	Power supply	Output
<b>VE327300</b>	Solar.Lux	Radiation sensor	-	-

# Electronic control relays

## CONTROL RELAY FOR ELECTRICAL QUANTITIES

### PHASE - VOLTAGE - CURRENT CONTROL



Code	Model	Description	Power supply	Capacity
<b>VP807200</b>	PSR400	Failure phase, voltage asymmetry and phase sequence control relay 1 relay 8A / 250V AC 2 DIN modules	400 V AC 50 Hz	3x230 V (400 V AC)



Code	Model	Description	Power supply	Capacity
<b>VE144200</b>	VCR	Maximum and minimum voltage control relay 1 relay 8A / 250V AC 2 DIN modules	230 V AC 50/60 Hz	500 V



Code	Model	Description	Power supply	Capacity
<b>VE143400</b>	CCR	Maximum and minimum current control relay 1 relay 8A / 250V AC 2 DIN modules	230 V AC 50/60 Hz	10 A

### LOADS CONTROL



Code	Model	Description	Power supply	Capacity
<b>VE737300</b>	Set PC RF8	Configured kit composed by unit control + 2 remote actuators* for radiofrequency	230 V AC 50/60 Hz	32 A

\*Other remote actuators are available on request: see accessories.



Code	Model	Description	Power supply	Capacity
<b>VE475000</b>	PC1R	Single-phase loads control relay 1 relay 16A/250V AC 2 DIN modules	230 V AC 50/60 Hz	32 A



Code	Model	Description	Power supply	Capacity
<b>VE467700</b>	PC3R	Single-phase loads control relay 3 relays 16A/250V AC 4 DIN modules	230 V AC 50/60 Hz	32 A

### ACCESSORIES FOR LOADS CONTROL



Code	Model	Description	Power supply	Capacity
<b>VE735700</b>	PC RF8	Radiofrequency control unit for loads control with 8 priority levels	230 V AC 50/60 Hz	32 A



<b>VE736500</b>	RX.16A	Radiofrequency remote actuator for loads control 1 relay 16A / 250 V AC	230 V AC 50/60 Hz	-
-----------------	--------	--	-------------------	---

# Electronic control relays

## CONTROL RELAY FOR ELECTRICAL QUANTITIES



### SOLAR LOADS CONTROL

Code	Model	Description	Power supply	Capacity
<b>VE474300</b>	SOLAR-3	Single-phase loads control relay for photovoltaic systems 3 relays 16 A/250 V AC 4 DIN modules	230 V AC 50/60 Hz	60 A with external toroid *

\* The toroid is included in the package.

## CONTROL RELAY



### TEMPERATURE CONTROL

Code	Model	Description	Power supply	Output
<b>VE447900</b>	TCR	2 DIN modules electronic thermostat with wall-mounting external probe	230 V AC 50/60 Hz	1 relay 8 A / 250 V AC

### MOTOR ALTERNATION RELAY



Code	Model	Description	Power supply	Output
<b>VP813000</b>	MCR048	Motor alternation control relay 4 DIN modules	24/48 V AC 50/60 Hz	2 relays 8 A / 250 V AC
<b>VP812200</b>	MCR230	Motor alternation control relay 4 DIN modules	115/230 V AC 50/60 Hz	2 relays 8 A / 250 V AC
<b>VP811400</b>	MCR400	Motor alternation control relay 4 DIN modules	400 V AC 50/60 Hz	2 relays 8 A / 250 V AC

### PUMPS REVERSAL RELAY



Code	Model	Description	Power supply	Output
<b>VE555900</b>	SEQUENCER	Control relay for pumps reversal 3 DIN modules - TMK3002400	24 V AC 50/60 Hz	1 relay 5 A / 250 V
<b>VE554200</b>	SEQUENCER	Control relay for pumps reversal 3 DIN modules - TMK300000	115 / 230 V AC 50/60 Hz	1 relay 5 A / 250 V
<b>VE628400</b>	SEQUENCER 2Q	Control relay for pumps reversal 3 DIN modules - TMK32Q2400	24 V AC 50/60 Hz	1 relay 5 A / 250 V
<b>VE629200</b>	SEQUENCER 2	Control relay for pumps reversal 3 DIN modules - TMK3202400	24 V AC 50/60 Hz	1 relay 5 A / 250 V
<b>VE611000</b>	SEQUENCER 3	Control relay for pumps reversal 6 DIN modules - TMK4000000	230 V AC 50/60 Hz	1 relay 5 A / 250 V

# Electronic control relays

## CONTROL RELAY FOR ELECTRICAL QUANTITIES



### TIMED RELAYS

Code	Model	Description	Power supply	Output
<b>VE145900</b>	TDMU	Multi-function timer 1 DIN module	12÷240 V AC/DC	1 relay 16 A / 250 V AC
<b>VE146700</b>	TPLU	Pause - Work timer 1 DIN module	12÷240 V AC/DC	1 relay 16 A / 250 V AC
<b>VE147500</b>	DSR	Star/delta starter 1 DIN module	12÷240 V AC/DC	2 relays 16 A / 250 V AC

## CONDUCTIVE LIQUID LEVEL CONTROL RELAY

### LIQUID LEVEL RELAY



Code	Model	Description	Power supply	Output
<b>VP810600</b>	LCR048	Electr. conductive liquid level control relay 4 DIN modules *	24/48 V AC 50/60 Hz	1 relay 8 A / 250 V AC
<b>VP809800</b>	LCR230	Electr. conductive liquid level control relay 4 DIN modules *	115/230 V AC 50/60 Hz	1 relay 8 A / 250 V AC
<b>VP808000</b>	LCR400	Electr. conductive liquid level control relay 4 DIN modules *	400 V AC 50/60 Hz	1 relay 8 A / 250 V AC

\* The electrodes must be ordered separately.

### CONDUCTIVE LIQUID LEVEL RELAY



Code	Model	Description	Power supply	Output
<b>VE607800</b>	ELETTROSONDA Q	Relay for conductive liquid 3 DIN modules EQ3SC01000	230 V AC 50/60 Hz	1 relay 5(2) A / 250 V
<b>VE608600</b>	ELETTROSONDA Q	Relay for conductive liquid 3 DIN modules EQ3SM01000	24-115-230 V AC 50/60 Hz	1 relay 5(2) A / 250 V
<b>VE616900</b>	ELETTROSONDA Q	Relay for conductive liquid * 2 DIN modules EQ2SAR1000	24 V AC 50/60 Hz	1 relay 5(2) A / 250 V
<b>VE552600</b>	ELETTROSONDA Q	Relay for conductive liquid * with 3 probes - 2 DIN modules EQ2SAR1003	24 V AC 50/60 Hz	1 relay 5(2) A / 250 V

\* Sensitivity adjustable on range 0÷100 kΩ.





# Electronic control relays

## CONDUCTIVE LIQUID LEVEL CONTROL RELAY



### CONDUCTIVE LIQUID LEVEL RELAY

Code	Model	Description	Power supply	Output
<b>VE615100</b>	ELETTROSONDA Q	Relay for conductive liquid * 2 DIN modules EQ2SCR1000	230V AC 50/60 Hz	1 relay 5(2) A / 250 V
<b>VE551800</b>	ELETTROSONDA Q	Relay for conductive liquid * with 3 probes - 2 DIN modules EQ2SCR1003	230 V AC 50/60 Hz	1 relay 5(2) A / 250 V
<b>VE617700</b>	ELETTROSONDA Q	Relay for conductive liquid* 3 DIN modules EQ3SMR1000	24-115-230 V AC 50/60 Hz	1 relay 5(2) A / 250 V
<b>VE553400</b>	ELETTROSONDA Q	Relay for conductive liquid * with 3 probes - 3 DIN modules EQ3SMR1003	24 - 115 - 230 V AC 50/60 Hz	1 relay 5(2) A / 250 V
<b>VE614400</b>	ELETTROSONDA EV	Relay for conductive liquid** 2 DIN modules EQ2MCR1000	230V AC 50/60 Hz	1 relay 5(2) A / 250 V
<b>VE550000</b>	ELETTROSONDA EV	Relay for conductive liquid ** with 3 probes - 2 DIN modules EQ2MCR1003	230 V AC 50/60 Hz	1 relay 5(2) A / 250 V
<b>VE652400</b>	ELETTROSONDA EV	Relay for conductive liquid** 3 DIN modules EQ3MCR2000	230V AC 50/60 Hz	1 relay 5(2) A / 250 V
<b>VE572400</b>	ELETTROSONDA DB	Relay for conductive liquid * 4 DIN modules ED4SCR1000	230 V AC 50/60 Hz	1 relay 5(2) A / 250 V
<b>VE585600</b>	ELETTROSONDA Z	Relay for conductive liquid * for socket 8 PIN EZOSBR1000	115 V AC 50/60 Hz	1 relay 5(2) A / 250 V
<b>VE623500</b>	ELETTROSONDA Z	Relay for conductive liquid* with 3 probes - with socket 11 PIN EZUSOR10Z3	115÷230 V AC 50/60 Hz	1 relay 5(2) A / 250V

\* Sensitivity adjustable on range 0÷100 kΩ.

\*\* Sensitivity adjustable on range 0÷100 kΩ. The delay is adjustable on field 0÷16 s.

### ACCESSORIES FOR CONDUCTIVE LIQUID LEVEL RELAY



Code	Model	Description	Power supply	Output
<b>VR448300</b>	ESL	Dip electrode	-	-
<b>VR449100</b>	ES	Dip electrode with ballast	-	-
<b>VR450900</b>	EST	Electrode for tanks with threaded connection	-	-

# Electronic control relays

## LIQUID LEVEL CONTROL RELAY



### LIQUID LEVEL RELAY

Code	Model	Description	Power supply	Output
VE548400	REKA	Liquid level control relay with capacitive sensor * TKZC40COG0	12/24 VCC-CA	1 relay 10(4) A / 250 V
VE549200	REKA	Liquid level control relay with capacitive sensor * TKZC4001A0	230 V CA 50/60 Hz	1 relay 10(4) A / 250 V

\* Compatible with a wide variety of liquid (water, wine, fruit juice, milk, soap, etc.) but without residual oils or fats. Suitable for application in small wells (until 20x20 cm).

# Electromechanical control relays

## SWITCHES FOR BLACK WATER



### TILTING SWITCHES FOR DARK WATER

Code	Model	Description	Cable type	Length (m)
VE515300	MACS	Immersed tilting level regulator * JGM0506BG0 Current capacity: 10(3)A / 250 V AC	Neoprene H07RN-F 3X1	5
VE516100	MACS	Immersed tilting level regulator * JGM1006BG0 Current capacity: 10(3)A / 250 V AC	Neoprene H07RN-F 3X1	10
VE517900	MACS	Immersed tilting level regulator * JGM2006BG0 Current capacity: 10(3)A / 250 V AC	Neoprene H07RN-F 3X1	20
VE518700	MACS	Immersed tilting level regulator * JPM0506BG0 Current capacity: 10(3)A / 250 V AC	PVC H05VV-F 3X1	5
VE519500	MACS	Immersed tilting level regulator * JPM1006BG0 Current capacity: 10(3)A / 250 V AC	PVC H05VV-F 3X1	10
VE520300	MACS	Immersed tilting level regulator * JPM2006BG0 Current capacity: 10(3)A / 250 V AC	PVC H05VV-F 3X1	20

\* Switching angle is  $\pm 45^\circ$

# Electromechanical control relays

## SWITCHES FOR BLACK WATER



### TILTING ATEX SWITCHES FOR DARK WATER

Code	Model	Description	Cable type	Length (m)
<b>VE521100</b>	MACS ATEX	Immersed tilting level regulator * JGM0506>>>0_atex Current capacity: 10(3)A / 250 V AC	Neoprene H07RN-F 3X1	5
<b>VE522900</b>	MACS ATEX	Immersed tilting level regulator * JGM1006>>>0_atex Current capacity: 10(3)A / 250 V AC	Neoprene H07RN-F 3X1	10
<b>VE523700</b>	MACS ATEX	Immersed tilting level regulator * JGM2006>>>0_atex Current capacity: 10(3)A / 250 V AC	Neoprene H07RN-F 3X1	20
<b>VE524500</b>	MACS ATEX	Immersed tilting level regulator * JPM0506>>>0_atex Current capacity: 10(3)A / 250 V AC	PVC H05VV-F 3X1	5
<b>VE525200</b>	MACS ATEX	Immersed tilting level regulator * JPM1006>>>0_atex Current capacity: 10(3)A / 250 V AC	PVC H05VV-F 3X1	10
<b>VE526000</b>	MACS ATEX	Immersed tilting level regulator * JPM2006>>>0_atex Current capacity: 10(3)A / 250 V AC	PVC H05VV-F 3X1	20

\* Switching angle is  $\pm 45^\circ$

### TILTING SWITCHES FOR DARK WATER



Code	Model	Description	Cable type	Length (m)
<b>VE527800</b>	e-FLY	Immersed tilting level compact regulator * eGM0506B00 Current capacity: 10(3)A / 250 V AC	Neoprene H07RN-F 3X1	5
<b>VE528600</b>	e-FLY	Immersed tilting level compact regulator * eGM1006B00 Current capacity: 10(3)A / 250 V AC	Neoprene H07RN-F 3X1	10
<b>VE529400</b>	e-FLY	Immersed tilting level compact regulator * eGM2006B00 Current capacity: 10(3)A / 250 V AC	Neoprene H07RN-F 3X1	20
<b>VE530200</b>	e-FLY	Immersed tilting level compact regulator * ePM0506B00 Current capacity: 10(3)A / 250 V AC	PVC H05VV-F 3X1	5
<b>VE531000</b>	e-FLY	Immersed tilting level compact regulator * ePM1006B00 Current capacity: 10(3)A / 250 V AC	PVC H05VV-F 3X1	10
<b>VE532800</b>	e-FLY	Immersed tilting level compact regulator * ePM2006B00 Current capacity: 10(3)A / 250 V AC	PVC H05VV-F 3X1	20

\* Switching angle is  $\pm 10^\circ$   
Also available in ATEX version.

# Electromechanical control relays

## SWITCHES FOR CLEAR WATER



### FLOAT SWITCHES FOR CLEAR WATER AND TANKS

Code	Model	Description	Cable type	Lenght (m)
<b>VE541900</b>	MAC3	Float level regulator with double chamber * MGM0306GB0C Current capacity: 10(4)A / 250 V AC	Neoprene H07RN-F 3X1	3
<b>VE542700</b>	MAC3	Float level regulator with double chamber * MGM0506GB0C Current capacity: 10(4)A / 250 V AC	Neoprene H07RN-F 3X1	5
<b>VE543500</b>	MAC3	Float level regulator with double chamber * MGM1006GB0C Current capacity: 10(4)A / 250 V AC	Neoprene H07RN-F 3X1	10
<b>VE573200</b>	MAC3	Float level regulator with double chamber * MGM1506GB0C Current capacity: 10(4)A / 250 V AC	Neoprene H07RN-F 3X1	15
<b>VE610200</b>	MAC3	Float level regulator with double chamber * MGM2006GB0C Current capacity: 10(4)A / 250 V AC	Neoprene H07RN-F 3X1	20
<b>VE544300</b>	MAC3	Float level regulator with double chamber * MPM0306GB0C Current capacity: 10(4)A / 250 V AC	PVC H05VV-F 3X1	3
<b>VE545000</b>	MAC3	Float level regulator with double chamber * MPM0506GB0C Current capacity: 10(4)A / 250 V AC	PVC H05VV-F 3X1	5
<b>VE546800</b>	MAC3	Float level regulator with double chamber * MPM1006GB0C Current capacity: 10(4)A / 250 V AC	PVC H05VV-F 3X1	10
<b>VE547600</b>	MAC3	Float level regulator with double chamber * MPM1506GB0C Current capacity: 10(4)A / 250 V AC	PVC H05VV-F 3X1	15
<b>VE574000</b>	MAC3	Float level regulator with double chamber * MPM2006GB0C Current capacity: 10(4)A / 250 V AC	PVC H05VV-F 3X1	20

\* In the product package is already present a counterweight of 220 g.

# Electromechanical control relays

## SWITCHES FOR CLEAR WATER



### FLOAT SWITCHES FOR CLEAR WATER AND TANKS

Code	Model	Description	Cable type	Lenght (m)
<b>VE533600</b>	KEY	Float level regulator * HGM0306HY0C Current capacity: 10(8)A / 250 V AC	Neoprene H07RN-F 3X1	3
<b>VE534400</b>	KEY	Float level regulator * HGM0506HY0C Current capacity: 10(8)A / 250 V AC	Neoprene H07RN-F 3X1	5
<b>VE535100</b>	KEY	Float level regulator * HGM1006HY0C Current capacity: 10(8)A / 250 V AC	Neoprene H07RN-F 3X1	10
<b>VE613600</b>	KEY	Float level regulator * HGM2006HY0C Current capacity: 10(8)A / 250 V AC	Neoprene H07RN-F 3X1	20
<b>VE536900</b>	KEY	Float level regulator * HPM0306HY0C Current capacity: 10(8)A / 250 V AC	PVC H05VV-F 3X1	3
<b>VE537700</b>	KEY	Float level regulator * HPM0506HY0C Current capacity: 10(8)A / 250 V AC	PVC H05VV-F 3X1	5
<b>VE538500</b>	KEY	Float level regulator * HPM1006HY0C Current capacity: 10(8)A / 250 V AC	PVC H05VV-F 3X1	10
<b>VE686200</b>	KEY	Float level regulator * HPM1006HY0 Current capacity: 10(8)A / 250 V AC	PVC H05VV-F 3X1	10
<b>VE539300</b>	KEY	Float level regulator * HPM1506HY0C Current capacity: 10(8)A / 250 V AC	PVC H05VV-F 3X1	15
<b>VE540100</b>	KEY	Float level regulator * HPM2006HY0C Current capacity: 10(8)A / 250 V AC	PVC H05VV-F 3X1	20

\* In the product package is already present a counterweight of 220 g.

## ACCESSORIES FOR FLOATINGS

### ACCESSORIES FOR FLOATINGS

Code	Model	Description	Weight (g)
<b>VE578100</b>	CONTR	Counterwight for float switches	220



# Boosting systems

## INVERTER ePOWER



### SINGLE-PHASE INVERTER FOR SINGLE-PHASE PUMPS

Code	Model	Description	Power supply	Pump voltage
<b>VE609400</b>	ePOWER-MM	Inverter for mounting on pipe. Pump maximum power: 1.1kW (1.5HP) 8A VEPR1130000	1x230 V AC	1x230 V AC

### SINGLE-PHASE INVERTER FOR THREE-PHASE PUMPS

Code	Model	Description	Power supply	Pump voltage
<b>VE637500</b>	ePOWER-MT	Inverter for mounting on pipe. Pump maximum power: 2.2kW (3HP) 10A VEPR2120000	1x230 V AC	3x230 V AC

## HYDRO CONTROLLER INVERTER



### SINGLE-PHASE INVERTER FOR THREE-PHASE PUMPS

Code	Model	Description	Power supply	Pump voltage
<b>VE638300</b>	HC-MM	Inverter with mounting on pipe. Pump maximum power: 1.1kW (1.5HP) 8A VHDR1130000	1x230 V AC	1x230 V AC
<b>VE639100</b>	HC-MM	Inverter with mounting on wall. Pump maximum power: 1.1kW (1.5HP) 8A VHDA1130000	1x230 V AC	1x230 V AC
<b>VE592200</b>	HC-MM	Inverter with mounting on pipe. Pump maximum power: 1.1kW (1.5HP) 8A VHDR1430000A	1x230 V AC	1x230 V AC
<b>VE640900</b>	HC-MM	Inverter with mounting on wall. Pump maximum power: 1.1kW (1.5HP) 8A VHDA1430000A	1x230 V AC	1x230 V AC
<b>VE641700</b>	HC-MM	Inverter with mounting on pipe. Pump maximum power: 1.6kW (2.2HP) 12A VHDR1140000	1x230 V AC	1x230 V AC
<b>VE643300</b>	HC-MM	Inverter with mounting on wall. Pump maximum power: 1.6kW (2.2HP) 12A VHDA1140000	1x230 V AC	1x230 V AC
<b>VE642500</b>	HC-MM	Inverter with mounting on pipe. Pump maximum power: 1.6kW (2.2HP) 12A VHDR1440000A	1x230 V AC	1x230 V AC
<b>VE644100</b>	HC-MM	Inverter with mounting on wall. Pump maximum power: 1.6kW (2.2HP) 12A VHDA1440000A	1x230 V AC	1x230 V AC

# Boosting systems

## HYDRO CONTROLLER INVERTER



### SINGLE-PHASE INVERTER FOR THREE-PHASE PUMPS

Code	Model	Description	Power supply	Pump voltage
<b>VE645800</b>	HC-MT	Inverter with mounting on pipe. Pump maximum power: 1.5kW (2HP) 8A VHDR0010010	1x230 V AC	3x230 V AC
<b>VE646600</b>	HC-MT	Inverter with mounting on wall. Pump maximum power: 2.2kW (3HP) 10A VHDA0010010	1x230 V AC	3x230 V AC
<b>VE636700</b>	HC-MT	Inverter with mounting on pipe. Pump maximum power: 1.5kW (2HP) 8A VHDR2420000A	1x230 V AC	3x230 V AC
<b>VE647400</b>	HC-MT	Inverter with mounting on wall. Pump maximum power: 2.2kW (3HP) 10A VHDA2420000A	1x230 V AC	3x230 V AC

### THREE-PHASE INVERTER FOR THREE-PHASE PUMPS

Code	Model	Description	Power supply	Pump voltage
<b>VE594800</b>	HC-TT	Inverter with mounting on pipe. Pump maximum power: 2.2kW (3HP) 6A VHDR3110000	3x400 V AC	3x400 V AC
<b>VE595500</b>	HC-TT	Inverter with mounting on wall. Pump maximum power: 2.2kW (3HP) 6A VHDA3110000	3x400 V AC	3x400 V AC
<b>VE630000</b>	HC-TT	Inverter with mounting on pipe. Pump maximum power: 2.2kW (3HP) 6A VHDR3410000A	3x400 V AC	3x400 V AC
<b>VE597100</b>	HC-TT	Inverter with mounting on wall. Pump maximum power: 2.2kW (3HP) 6A VHDA3410000A	3x400 V AC	3x400 V AC
<b>VE591400</b>	HC-TT	Inverter with mounting on pipe. Pump maximum power: 4kW (5.5HP) 11A VHDR3120000	3x400 V AC	3x400 V AC
<b>VE648200</b>	HC-TT	Inverter with mounting on wall. Pump maximum power: 4kW (5.5HP) 11A VHDA3120000	3x400 V AC	3x400 V AC
<b>VE631800</b>	HC-TT	Inverter with mounting on pipe. Pump maximum power: 4kW (5.5HP) 11A VHDR3420000A	3x400 V AC	3x400 V AC
<b>VE649000</b>	HC-TT	Inverter with mounting on wall. Pump maximum power: 4kW (5.5HP) 11A VHDA3420000A	3x400 V AC	3x400 V AC
<b>VE650800</b>	HC-TT	Inverter with mounting on wall. Pump maximum power: 5.5kW (7.5HP) 15A VHDA3130000	3x400 V AC	3x400 V AC
<b>VE651600</b>	HC-TT	Inverter with mounting on wall. Pump maximum power: 5.5kW (7.5HP) 15A VHDA3430000A	3x400 V AC	3x400 V AC





# HEAT REGULATION

	<b>DIGITAL THERMOMETERS</b>	74
	<b>DIGITAL HEAT REGULATORS</b>	74
	<b>DIGITAL REFRIGERATION REGULATORS</b>	77
	<b>DIGITAL HUMIDITY AND PRESSURE REGULATORS</b>	78
	<b>TEMPERATURE PROBES</b>	79
	<b>HUMIDITY AND PRESSURE PROBES</b>	80
	<b>ACCESSORIES</b>	81
	<b>TRANSFORMER WITH TERMINALS</b>	81

# Digital thermometers

## PANEL-MOUNTING THERMOMETERS

### THERMOMETERS FOR RTD PROBES



Code	Model	Description	Power supply
VM619400	TM NiPt-P7A	Thermometer NiPt - 72x72 mm	24/230 V AC
VM620200	TM NiPt-P3D	Thermometer NiPt - 33x75 mm	12÷24 V AC/DC



Code	Model	Description	Power supply
VM621000	TM NTC-P7A	Thermometer NTC - 72x72 mm	24/230 V AC
VM622800	TM NTC-P3D	Thermometer NTC - 33x75 mm	12÷24 V AC/DC

### THERMOMETERS FOR THERMOCOUPLE PROBES



Code	Model	Description	Power supply
VM623600	TM JK-P7A	Thermometer JK - 72x72 mm	24/230 V AC
VM624400	TM JK-P3D	Thermometer JK - 33x75 mm	12÷24 V AC/DC

# Digital heat regulators

## PANEL-MOUNTING HEAT REGULATORS

### HEAT REGULATORS FOR RTD PROBES



Code	Model	Description	Power supply	N. relays
VM625100	HT NiPt-1P7A	Heat regulator NiPt - 72x72 mm	24/230 V AC	1
VM626900	HT NiPt-2P7A	Heat regulator NiPt - 72x72 mm	24/230 V AC	2
VM627700	HT NiPt-1P3D	Heat regulator NiPt - 33x75 mm	12÷24 V AC/DC	1
VM628500	HT NiPt-1P3A	Heat regulator NiPt - 33x75 mm	230 V AC	1
VE346300	HT NiPt-2P3A	Heat regulator NiPt - 33x75 mm	230 V AC	2
VM629300	HT NiPt-2P3D	Heat regulator NiPt - 33x75 mm	12÷24 V AC/DC	2



Code	Model	Description	Power supply	N. relays
VM632700	HT NTC-1P7A	Heat regulator NTC - 72x72 mm	24/230 V AC	1
VM633500	HT NTC-2P7A	Heat regulator NTC - 72x72 mm	24/230 V AC	2
VM634300	HT NTC-1P3D	Heat regulator NTC - 33x75 mm	12÷24 V AC/DC	1
VM635000	HT NTC-1P3A	Heat regulator NTC - 33x75 mm	230 V AC	1
VE347100	HT NTC-2P3A	Heat regulator NTC - 33x75 mm	230 V AC	2
VM636800	HT NTC-2P3D	Heat regulator NTC - 33x75 mm	12÷24 V AC/DC	2

# Digital heat regulators

## PANEL-MOUNTING HEAT REGULATORS

### HEAT REGULATORS FOR RTD PROBES



Code	Model	Description	Power supply	N. relays
VM668100	FHT NTC-2P3D	Full heat regulator NTC - 33x75 mm	12÷24 V AC/DC	2

### HEAT REGULATORS FOR THERMOCOUPLE PROBES



Code	Model	Description	Power supply	N. relays
VM639200	HT JK-1P7A	Heat regulator JK - 72x72 mm	24/230 V AC	1
VM640000	HT JK-2P7A	Heat regulator JK - 72x72 mm	24/230 V AC	2
VM641800	HT JK-1P3D	Heat regulator JK - 33x75 mm	12÷24 V AC/DC	1
VM642600	HT JK-1P3A	Heat regulator JK - 33x75 mm	230 V AC	1
VE348900	HT JK-2P3A	Heat regulator JK - 33x75 mm	230 V AC	2
VM643400	HT JK-2P3D	Heat regulator JK - 33x75 mm	12÷24 V AC/DC	2

### HEAT REGULATORS FOR RTD/THERMOCOUPLE PROBES AND LINEAR SENSORS



Code	Model	Description	Power supply	N. relays
VM666500	FHT-1P3D	Heat regulator Full NiPt, JK, linear sensors 0-20 mA, 4-20 mA, 0-1 V - 33x75 mm	12÷24 V AC/DC	1
VM667300	FHT-2P3D	Heat regulator Full NiPt, JK, linear sensors 0-20 mA, 4-20 mA, 0-1 V - 33x75 mm	12÷24 V AC/DC	2



Code	Model	Description	Power supply	N. relays
VE247300	HT Pt JK - 2P4D	Heat regulator Pt, JK, linear sensors 48x48 mm	24 V AC/DC	2

VE248100	HT Pt JK - 2P4A	Heat regulator Pt, JK, linear sensors 48x48 mm	115÷230 V AC	2
----------	-----------------	---	--------------	---



VE249900	H2T Pt JK - 2P4D	2 Display heat regulator Pt, JK, linear sensors 48x48 mm	24 V AC/DC	2
----------	------------------	---	------------	---

VE250700	H2T Pt JK - 2P4A	2 Display heat regulator Pt, JK, linear sensors 48x48 mm	115÷230 V AC	2
----------	------------------	---	--------------	---

# Digital heat regulators

## DIN-RAIL HEAT REGULATORS

### HEAT REGULATORS FOR RTD PROBES



Code	Model	Description	Power supply	N. relays
VM630100	HT NiPt-1DA	Heat regulator NiPt - 4 DIN modules	24/230 V AC	1
VM631900	HT NiPt-2DA	Heat regulator NiPt - 4 DIN modules	24/230 V AC	2



Code	Model	Description	Power supply	N. relays
VM637600	HT NTC-1DA	Heat regulator NTC - 4 DIN modules	24/230 V AC	1
VM638400	HT NTC-2DA	Heat regulator NTC - 4 DIN modules	24/230 V AC	2



Code	Model	Description	Power supply	N. relays
VM671500	FHT NTC-2DA	Full heat regulator NTC - 4 DIN modules	24/230 V AC	2

### HEAT REGULATORS FOR THERMOCOUPLE PROBES



Code	Model	Description	Power supply	N. relays
VM644200	HT JK-1DA	Heat regulator JK - 4 DIN modules	24/230 V AC	1
VM645900	HT JK-2DA	Heat regulator JK - 4 DIN modules	24/230 V AC	2

### HEAT REGULATORS FOR RTD/THERMOCOUPLE PROBES AND LINEAR SENSORS



Code	Model	Description	Power supply	N. relays
VM669900	FHT-1DA	Heat regulator Full NiPt, JK, 0-20 mA, 4-20 mA, 0-1 V linear sensors 4 DIN modules	24/230 V AC	1
VM670700	FHT-2DA	Heat regulator Full NiPt, JK, 0-20 mA, 4-20 mA, 0-1 V linear sensors 4 DIN modules	24/230 V AC	2

# Digital regulators

## REFRIGERATION REGULATORS

### PANEL-MOUNTING REGULATORS



Code	Model	Description	Power supply	N. relays
VM650900	FR NTC-1P3D	Refrigeration regulator NTC - 33x75 mm	12÷24 V AC/DC	1
VM651700	FR NTC-1P3A	Refrigeration regulator NTC - 33x75 mm	230 V AC	1



Code	Model	Description	Power supply	N. relays
VM652500	FR NTC-4P3D	Refrigeration regulator NTC for fanned cool units 33x75 mm	12÷24 V AC/DC	4

### DIN-RAIL REGULATORS



Code	Model	Description	Power supply	N. relays
VM659000	FR NTC-1DA	Refrigeration regulator NTC - 4 DIN modules	24/230 V AC	1



Code	Model	Description	Power supply	N. relays
VM660800	FR NTC-2DA	Refrigeration regulator NTC - 4 DIN modules	24/230 V AC	2

# Digital regulators

## HUMIDITY REGULATORS



### PANEL-MOUNTING REGULATORS

Code	Model	Description	Power supply	N. relays
VM646700	HR-1P7A	Humidity regulator - 72x72 mm	24/230 V AC	1
VM647500	HR-2P7A	Humidity regulator - 72x72 mm	24/230 V AC	2
VM653300	HR-1P3D	Humidity regulator - 33x75 mm	12÷24 V AC/DC	1
VM654100	HR-1P3A	Humidity regulator - 33x75 mm	100÷230 V AC / 140÷300 V DC	1
VM655800	HR-2P3D	Humidity regulator - 33x75 mm	12÷24 V AC/DC	2

### DIN-RAIL REGULATORS



Code	Model	Description	Power supply	N. relays
VM661600	HR-1DA	Humidity regulator 4 DIN modules	24/230 V AC	1
VM662400	HR-2DA	Humidity regulator 4 DIN modules	24/230 V AC	2

## PRESSURE REGULATORS



### PANEL-MOUNTING REGULATORS

Code	Model	Description	Power supply	N. relays
VM648300	PR-1P7A	Pressure regulator - 72x72 mm	24/230 V AC	1
VM649100	PR-2P7A	Pressure regulator - 72x72 mm	24/230 V AC	2
VM656600	PR-1P3D	Pressure regulator - 33x75 mm	12÷24 V AC/DC	1
VM657400	PR-1P3A	Pressure regulator - 33x75 mm	230 V AC	1
VM658200	PR-2P3D	Pressure regulator - 33x75 mm	12÷24 V AC/DC	2

### DIN-RAIL REGULATORS



Code	Model	Description	Power supply	N. relays
VM663200	PR-1DA	Pressure regulator 4 DIN modules	24/230 V AC	1
VM664000	PR-2DA	Pressure regulator 4 DIN modules	24/230 V AC	2

# Probes

## TEMPERATURE PROBES

### RTD - THERMOCOUPLE PROBES



Code	Model	Description	Cable length
VJ44170000	Ni 100	Temperature probe 20 ÷ +105 °C	3 mt



Code	Model	Description	Cable length
VJ44250000	Pt 100	Temperature probe 0 ÷ +400 °C	3 mt
VJ44250010	Pt 100 10MT	Temperature probe 0 ÷ +400 °C	10 mt



Code	Model	Description	Cable length
VN879300	Pt 100 E	Temperature probe 0 ÷ +200 °C	1.5 mt



Code	Model	Description	Cable length
VE122800	Pt 100 EC	Temperature probe -50 ÷ +110 °C - IP68	1.5 mt



Code	Model	Description	Cable length
VN870200	NTC	Temperature probe 40 ÷ +110 °C	1.5 mt
VE152500	NTC 3 MT	Temperature probe 40 ÷ +110 °C	3 mt



Code	Model	Description	Cable length
VE123600	NTCC	Temperature probe -50 ÷ +110 °C - IP68	1.5 mt



Code	Model	Description	Cable length
VE124400	NTC BC	Bracelet probe -50 ÷ +120 °C - IP67	1.5 mt



Code	Model	Description	Cable length
VJ44660000	Pt 1000	Temperature probe 40 ÷ +200 °C	1.5 mt



Code	Model	Description	Cable length
VJ44330000	Fe-Co (J)	Temperature probe 0 ÷ +400 °C	3 mt



Code	Model	Description	Cable length
VJ44410000	Cr-Al (K)	Temperature probe 0 ÷ +400 °C	3 mt



Code	Model	Description	Cable length
VJ44900000	Cr-Al 1200 (K)	Temperature probe 0 ÷ +400 °C	3 mt

Operating range refers to the "Probe + Cable" set.

# Probes

## HUMIDITY PROBES

### ACTIVE SENSOR FOR DOMESTIC APPLICATION



Code	Model	Description	Power supply	Output signal
VN873600	SUR 2	Humidity probe 10÷90% R.H. non condensing	9÷30 V DC or 12÷24 V AC/DC	Voltage 0÷1V Current 4÷20 mA

## PRESSURE PROBES

### ACTIVE SENSORS WITH 1/4" SAE CONNECTION



Code	Model	Description	Power supply	Output signal
VN871000	SPK-10	Pressure probe -0.5÷7 bar	8÷30 V DC	Current 4÷20 mA
VN872800	SPK-30	Pressure probe 0÷30 bar	8÷30 V DC	Current 4÷20 mA



# Accessories heat regulation

## ACCESSORIES FOR THERMOMETERS - HEAT REGULATORS - REGULATORS

### ADAPTERS FOR 72X72 MM PANEL INSTRUMENTS



Code	Model	Description
VJ44820000	EVCOP	Sealable protective cover for 72x72 mm instruments

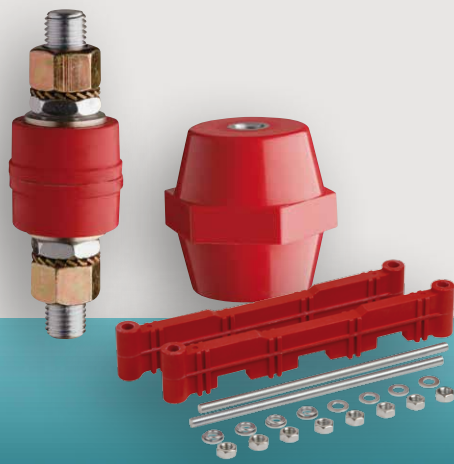


Code	Model	Description
VJ44580000	EVAD	Adapter from 72x72 mm to 96x96 mm

### TRANSFORMER WITH TERMINALS



Code	Model	Description	Prim./Sec. Voltage	Power supply
VE256400	TM3 230/12	Transformer with terminals	230/12	3 VA
VE257200	TM3 115/12	Transformer with terminals	115/12	3 VA
VE258000	TM3 230/24	Transformer with terminals	230/24	3 VA
VE259800	TM3 115/24	Transformer with terminals	115/24	3 VA
VE260600	TM6 230/12	Transformer with terminals	230/12	6 VA
VE261400	TM6 230/24	Transformer with terminals	230/24	6 VA



 **Vemer**  
SPA

# INSULATORS AND BUSBAR SUPPORTS



**INSULATORS**

**84**

**BUSBAR SUPPORTS**

**89**

# Polyester and fiberglass insulators

## SPACER AND LOAD-BEARING INSULATORS DP SERIES

### INSULATORS WITH FEMALE-FEMALE THREADED CONNECTOR



Code	Model	Height (mm)	Thread	Type
SA511300	DP6012-03	12	M3	Hexagonal
SA512100	DP8015-04	15	M4	Octagonal
SA513900	DP6016-04	16	M4	Hexagonal
SA514700	DP6020-04	20	M4	Hexagonal
SA515400	DP6020-05	20	M5	Hexagonal
SA516200	DP6020-06	20	M6	Hexagonal
SA517000	DP6026-04	25.5	M4	Hexagonal
SA519600	DP6026-05	25.5	M5	Hexagonal
SA520400	DP6026-06	25.5	M6	Hexagonal
SA521200	DP6030-06	30	M6	Hexagonal
SA522000	DP6030-08	30	M8	Hexagonal
SA524600	DP8035-06	35	M6	Octagonal
SA525300	DP6035-06	35	M6	Hexagonal
SA526100	DP8035-08	35	M8	Octagonal
SA527900	DP6035-08	35	M8	Hexagonal
SA528700	DP6035-10	35	M10	Hexagonal
SA529500	DP6036-06	36	M6	Hexagonal
SA530300	DP6036-08	36	M8	Hexagonal
SA531100	DP6036-10	36	M10	Hexagonal
SA532900	DP6040-06	40	M6	Hexagonal
SA533700	DP6040-08	40	M8	Hexagonal
SA534500	DP6040-10	40	M10	Hexagonal
SA535200	DP6040-12	40	M12	Hexagonal
SA536000	DP8045-06	45	M6	Octagonal
SA537800	DP8045-08	45	M8	Octagonal
SA539400	DP8045-10	45	M10	Octagonal
SA538600	DP8046-08	46	M8	Octagonal
SA540200	DP6046-08	46	M8	Hexagonal
SA541000	DP6046-10	46	M10	Hexagonal
SA542800	DP6046-12	46	M12	Hexagonal
SA543600	DP6050-06	50	M6	Hexagonal
SA544400	DP6050-08	50	M8	Hexagonal
SA545100	DP6050-10	50	M10	Hexagonal
SA546900	DP6051-08	50	M8	Hexagonal
SA547700	DP6051-10	50	M10	Hexagonal
SA548500	DP6051-12	50	M12	Hexagonal
SA549300	DP6055-08	55	M8	Hexagonal
SA550100	DP6055-10	55	M10	Hexagonal
SA551900	DP6055-12	55	M12	Hexagonal
SA552700	DP8060-08	60	M8	Octagonal
SA553500	DP8060-10	60	M10	Octagonal
SA554300	DP6060-12	60	M12	Hexagonal
SA555000	DP6063-06	63	M6	Hexagonal
SA556800	DP6063-08	63	M8	Hexagonal
SA557600	DP6063-10	63	M10	Hexagonal
SA558400	DP6065-08	65	M8	Hexagonal
SA559200	DP6065-10	65	M10	Hexagonal
SA560000	DP6065-12	65	M12	Hexagonal
SA561800	DP6070-10	70	M10	Hexagonal

# Polyester and fiberglass insulators

## SPACER AND LOAD-BEARING INSULATORS DP SERIES



### INSULATORS WITH FEMALE-FEMALE THREADED CONNECTOR

Code	Model	Height (mm)	Thread	Type
SA562600	DP6070-12	70	M12	Hexagonal
SA563400	DP6070-16	70	M16	Hexagonal
SA565900	DP8075-10	75	M10	Octagonal
SA566700	DP8075-12	75	M12	Octagonal
SA567500	DP8075-16	75	M16	Octagonal
SA569100	DP6075-16	75	M16	Hexagonal
SA570900	DP6076-08	76	M8	Hexagonal
SA571700	DP6076-10	76	M10	Hexagonal
SA572500	DP6076-12	76	M12	Hexagonal
SA573300	DP6080-10	80	M10	Hexagonal
SA574100	DP6080-12	80	M12	Hexagonal
SA575800	DP6080-16	80	M16	Hexagonal
SA576600	DP8100-12	100	M12	Octagonal
SA577400	DP8100-16	100	M16	Octagonal
SA578200	DP8102-12	102	M12	Octagonal
SA579000	DP8102-16	102	M16	Octagonal

## SPACER COLUMN INSULATORS CP SERIES



### INSULATORS WITH FEMALE-FEMALE THREADED CONNECTOR

Code	Model	Height (mm)	Diameter (mm)	Thread
SA580800	CP2016-04	16	20	M4
SA581600	CP2016-05	16	20	M5
SA582400	CP2016-06	16	20	M6
SA583200	CP2016-08	16	20	M8
SA584000	CP2020-04	20	20	M4
SA585700	CP2020-05	20	20	M5
SA587300	CP2020-06	20	20	M6
SA588100	CP2020-08	20	20	M8
SA589900	CP2025-04	25	20	M4
SA590700	CP2025-05	25	20	M5
SA591500	CP2025-06	25	20	M6
SA592300	CP2025-08	25	20	M8
SA594900	CP2030-05	30	20	M5
SA595600	CP2030-06	30	20	M6
SA596400	CP2030-08	30	20	M8
SA609500	CP3030-06	30	30	M6
SA610300	CP3030-08	30	30	M8
SA627700	CP4030-08	30	40	M8
SA628500	CP4030-10	30	40	M10
SA597200	CP2035-05	35	20	M5
SA598000	CP2035-06	35	20	M6
SA599800	CP2035-08	35	20	M8

# Polyester and fiberglass insulators

## SPACER COLUMN INSULATORS CP SERIES

### INSULATORS WITH FEMALE-FEMALE THREADED CONNECTOR



Code	Model	Height (mm)	Diameter (mm)	Thread
SA611100	CP3035-06	35	30	M6
SA612900	CP3035-08	35	30	M8
SA629300	CP4035-08	35	40	M8
SA630100	CP4035-10	35	40	M10
SA600400	CP2040-05	40	20	M5
SA601200	CP2040-06	40	20	M6
SA602000	CP2040-08	40	20	M8
SA613700	CP3040-06	40	30	M6
SA614500	CP3040-08	40	30	M8
SA631900	CP4040-08	40	40	M8
SA632700	CP4040-10	40	40	M10
SA633500	CP4040-12	40	40	M12
SA603800	CP2045-05	45	20	M5
SA604600	CP2045-06	45	20	M6
SA605300	CP2045-08	45	20	M8
SA615200	CP3045-06	45	30	M6
SA616000	CP3045-08	45	30	M8
SA634300	CP4045-08	45	40	M8
SA635000	CP4045-10	45	40	M10
SA636800	CP4045-12	45	40	M12
SA606100	CP2050-05	50	20	M5
SA607900	CP2050-06	50	20	M6
SA608700	CP2050-08	50	20	M8
SA617800	CP3050-06	50	30	M6
SA618600	CP3050-08	50	30	M8
SA637600	CP4050-08	50	40	M8
SA638400	CP4050-10	50	40	M10
SA639200	CP4050-12	50	40	M12
SA619400	CP3055-06	55	30	M6
SA620200	CP3055-08	55	30	M8
SA640000	CP4055-08	55	40	M8
SA642600	CP4055-10	55	40	M10
SA645900	CP4055-12	55	40	M12
SA621000	CP3060-06	60	30	M6
SA622800	CP3060-08	60	30	M8
SA646700	CP4060-08	60	40	M8
SA647500	CP4060-10	60	40	M10
SA648300	CP4060-12	60	40	M12
SA623600	CP3065-06	65	30	M6
SA624400	CP3065-08	65	30	M8
SA625100	CP3070-06	70	30	M6
SA626900	CP3070-08	70	30	M8

# Polyester and fiberglass insulators

## SPACER AND LOAD-BEARING INSULATORS WITH PROTRUDING CONNECTOR DPS SERIES

### INSULATORS WITH FEMALE-FEMALE THREADED CONNECTOR



Code	Model	Height (mm)	Width (mm)	Thread
<b>SA670700</b>	DPS6035-06	34.9	32	M6
<b>SA671500</b>	DPS6035-08	34.9	32	M8

## SPACER COLUMN INSULATORS WITH PROTRUDING CONNECTOR CPS SERIES

### INSULATORS WITH FEMALE-FEMALE THREADED CONNECTOR



Code	Model	Height (mm)	Width (mm)	Thread
<b>SA676400</b>	CPS2035-05	35	20	M5
<b>SA677200</b>	CPS2035-06	35	20	M6
<b>SA678000</b>	CPS2035-08	35	20	M8
<b>SA679800</b>	CPS2050-06	50	20	M6
<b>SA680600</b>	CPS2050-08	50	20	M8
<b>SA681400</b>	CPS2070-06	70	20	M6
<b>SA682200</b>	CPS2070-08	70	20	M8
<b>SA683000</b>	CPS3070-06	70	30	M6
<b>SA684800</b>	CPS3070-08	70	30	M8
<b>SA685500</b>	CPS4070-08	70	40	M8
<b>SA686300</b>	CPS4070-10	70	40	M10
<b>SA687100</b>	CPS4070-12	70	40	M12

## PETTICOAT INSULATORS CI SERIES

### MODULAR SERIES



Code	Model	Height (mm)	Width (mm)	Thread
<b>SA659000</b>	CI052-08	52	100	M8
<b>SA660800</b>	CI052-10	52	100	M10
<b>SA661600</b>	CI052-12	52	100	M12
<b>SA662400</b>	CI052-16	52	100	M16
<b>SA663200</b>	CI067-12	67	100	M12
<b>SA664000</b>	CI067-16	67	100	M16
<b>SA665700</b>	CI160-12	160	100	M12
<b>SA666500</b>	CI160-16	160	100	M16

# Polyester and fiberglass insulators

## PETTICOAT INSULATORS CI SERIES

### FORMAT SERIES



Code	Model	Height (mm)	Width (mm)	Thread
SA649100	CI006-12	52	100	M12
SA650900	CI006-16	52	100	M16
SA651700	CI010-12	104	100	M12
SA652500	CI010-16	104	100	M16
SA653300	CI015-12	156	100	M12
SA654100	CI015-16	156	100	M16
SA655800	CI020-12	208	100	M12
SA656600	CI020-16	208	100	M16
SA657400	CI030-12	260	100	M12
SA658200	CI030-16	260	100	M16

## PASSING INSULATED IP SERIES

### NORMAL PASSING INSULATORS



Code	Model	Height (mm)	Rated capacity	Thread
SA688900	IPN025	50	25 A	M4
SA689700	IPN050	65	50 A	M6
SA690500	IPN080	80	80 A	M8
SA691300	IPN120	95	120 A	M10
SA692100	IPN200	105	200 A	M12
SA693900	IPN300	135	300 A	M16
SA694700	IPN450	155	450 A	M20

## TENSIONING INSULATORS TEP SERIES

### TENSIONING INSULATORS WITH OPPOSED-THREAD OR LOOP ENDS



Code	Model	Height (mm)	Ultimate tensile strength (daN)	Thread
SA668100	TEP 1	160	2000	M12
SA669900	TEP 2	220/230	2000	-



# Polyester and fiberglass insulators

## ACCESSORIES FOR DP-CP-DPS-CPS-CI SERIES



### HEADLESS SCREWS GROUP

Code	Model	Length (mm)	Thread
<a href="#">SA490000</a>	GV2506	25	M6
<a href="#">SA491800</a>	GV3006	30	M6
<a href="#">SA492600</a>	GV3008	30	M8
<a href="#">SA493400</a>	GV4008	40	M8
<a href="#">SA494200</a>	GV4010	40	M10
<a href="#">SA495900</a>	GV5012	50	M12
<a href="#">SA496700</a>	GV6016	60	M16

## Busbar supports

### STANDARD POLYESTER AND FIBERGLASS BUSBAR SUPPORTS SPI SERIES



#### BAR-HOLDING ELEMENTS WITH THREADED BARS, WASHERS AND ZINC-COATED NUTS

Code	Model	System	Bar-phase dimensions (mm)	Bar-neutral dimensions (mm)
<a href="#">SA497500</a>	SPI31	Three-phase	32x4 - 63x5	-
<a href="#">SA498300</a>	SPI32	Three-phase	50x5 - 100x10 / 50x5 - 100x5	-
<a href="#">SA499100</a>	SPI33	Three-phase	50x8 - 125x10 / 50x5 - 125x10	-
<a href="#">SA500600</a>	SPI34	Three-phase	50x8 - 160x10 / 50x5 - 160x10	-

Code	Model	System	Bar-phase dimensions (mm)	Bar-neutral dimensions (mm)
<a href="#">SA501400</a>	SPI41	Three-phase + neutral	32x4 - 63x5	32x4 - 63x4
<a href="#">SA502200</a>	SPI42	Three-phase + neutral	50x5 - 100x10 / 50x5 - 100x5	50x4 - 100x5
<a href="#">SA503000</a>	SPI43	Three-phase + neutral	50x8 - 125x10 / 50x5 - 125x10	50x4 - 125x10
<a href="#">SA504800</a>	SPI44	Three-phase + neutral	50x8 - 160x10 / 50x5 - 160x10	50x4 - 160x10 / 50x4 - 160x10

#### SPACING SLUGS



Code	Model	Thickness (mm)
<a href="#">SA477700</a>	SB010	1
<a href="#">SA478500</a>	SB020	2
<a href="#">SA479300</a>	SB025	2.5
<a href="#">SA480100</a>	SB030	3
<a href="#">SA481900</a>	SB035	3.5
<a href="#">SA482700</a>	SB040	4
<a href="#">SA483500</a>	SB045	4.5
<a href="#">SA484300</a>	SB050	5
<a href="#">SA485000</a>	SB060	6
<a href="#">SA486800</a>	SB075	7.5
<a href="#">SA487600</a>	SB080	8
<a href="#">SA488400</a>	SB100	10
<a href="#">SA489200</a>	SB110	11



# ACCESSORIES



ACCESSORIES FOR INSTALLATION

92

# Accessories for installation

## CABLE GROMMET



### PVC CABLE GROMMET WITH MEMBRANE

Code	Model	Hole diameter for mounting (mm)	Cable diameter (mm)	Sheet thickness (mm)
<a href="#">SA782000</a>	80709	13	8.5	2
<a href="#">SA783800</a>	80711	15.5	10.5	2
<a href="#">SA784600</a>	80714	19	14	2
<a href="#">SA785300</a>	80715	20.5	15	2
<a href="#">SA786100</a>	80718	23	18	2.5
<a href="#">SA787900</a>	80722	28.5	22	2.5
<a href="#">SA788700</a>	80732	37.5	32	2.5
<a href="#">SA789500</a>	80740	47.5	40	2.5



### PVC CABLE GROMMET

Code	Model	Hole diameter for mounting (mm)	Cable diameter (mm)	Sheet thickness (mm)
<a href="#">VE357000</a>	10479	28	21	2
<a href="#">VE358800</a>	10460	24	13.5	2
<a href="#">VE359600</a>	10438	18	16	2
<a href="#">VE360400</a>	10445	21	16	2
<a href="#">VE361200</a>	10412	18	13	2
<a href="#">VE362000</a>	10050	11.5	8.5	1.2
<a href="#">VE363800</a>	10031	10	6	4
<a href="#">VE364600</a>	10102	11	6	1.5
<a href="#">VE365300</a>	10285	7.5	4	3.25

# Accessories for installation

## TECHNICAL SPRAYS



### TECHNICAL SPRAYS

Code	Model	Description	Format (ml)
<b>VE491700</b>	C01	Unblocker - Lubricant - Waterproof - Cleaner	400
<b>VE492500</b>	C02	Cleaner - Sanitizer for air conditioners	400
<b>VJ90280000</b>	C03	Compressed air	400
<b>VJ90020000</b>	C04	Clean dry contacts	200
<b>VJ90100000</b>	C05	Lubricating contact cleaner	200
<b>VE494100</b>	C06	Universal lubricant	400
<b>VE493300</b>	C07	Silicone based oil - Lubricant	400
<b>VE495800</b>	C08	Professional zinc 98%	400
<b>VE496600</b>	C09	Removes silicone, glue, paint	200
<b>VE500500</b>	C10/R	Red marker	400
<b>VE499000</b>	C10/G	Yellow marker	400
<b>VE498200</b>	C10/B	Blue marker	400
<b>VE502100</b>	C10/N	Black marker	400

## LUBRICANT FOR CABLES



### LUBRICANT FOR CABLES

Code	Model	Description	Format (ml)
<b>VE497400</b>	SNAKE	Liquid lubricant in cream for cables installation	750







Vemer SpA  
Via Camp Lonc, 16  
I - 32032 Villapaiera - Feltre (BL)  
Tel. +39 0439 80638  
Fax +39 0439 80619  
[www.vemer.it](http://www.vemer.it)  
[info@vemer.it](mailto:info@vemer.it)